



# District Analysis and Review Tool (DART)

Select your district. If desired, select a "comparable" district, no district, or any other district.

Dennis-Yarmouth
Harwich

## Table of Contents

- [District Context](#)
- [Curriculum and Assessment](#)
- [Curriculum and Assessment - Achievement Gap](#)
- [Leadership, Human Resources, and Professional Development](#)
- [Student Support](#)
- [Finance and Asset Management](#)

## Resources

- [Aligned with District Standards and Indicators](#)
- [User Guide](#)
- [DART for Schools](#)
- [DART Detail: Finance and Staffing](#)
- [DART Webpage](#)

	2010 NCLB Accountability Status		District Assistance Level
	English Language Arts	Mathematics	
Dennis-Yarmouth	Improvement Year 1 - Aggregate	Corrective Action - Subgroups	Level 3
Harwich			Level 1

\*Districts are most similar to your district in terms of grade span, enrollment, and special population.  
**Orange-shaded row:** Your district **Blue-shaded row:** Highest performing of the other 10 districts in 2009 and 2010 .

Comparable Districts Overview	Grade span	2010-11 October Enrollment				2010 MCAS % Advanced/Proficient		2010 MCAS Growth	
		Total Enrollment	Low Income	SPED	LEP	ELA	Math	ELA	Math
Attleboro*	PK - 12	5,855	30.8	16.4	4.7	69%	62%	52.0	60.0
Dennis-Yarmouth*	PK - 12	3,199	38.1	15.9	4.9	63%	48%	48.0	46.0
Gardner*	PK - 12	2,563	49.2	19.2	3.8	64%	48%	47.0	47.0
Leominster*	PK - 12	6,214	43.9	17.2	5.9	59%	55%	45.0	47.0
Medford*	PK - 12	4,849	33.4	18.7	6.7	64%	50%	49.0	48.0
Milford*	PK - 12	4,185	28.1	15.0	6.2	71%	59%	57.0	51.0
Norwood*	PK - 12	3,454	26.0	16.2	4.7	71%	58%	51.0	52.0
Quincy*	PK - 12	9,125	45.1	15.5	12.1	67%	55%	55.0	50.0
Rockland*	PK - 12	2,260	35.9	16.8	1.8	59%	45%	45.0	46.0
Stoughton*	PK - 12	3,777	29.0	14.6	5.4	70%	64%	48.0	52.0
West Springfield*	PK - 12	3,932	46.4	20.3	7.4	60%	58%	41.0	46.0

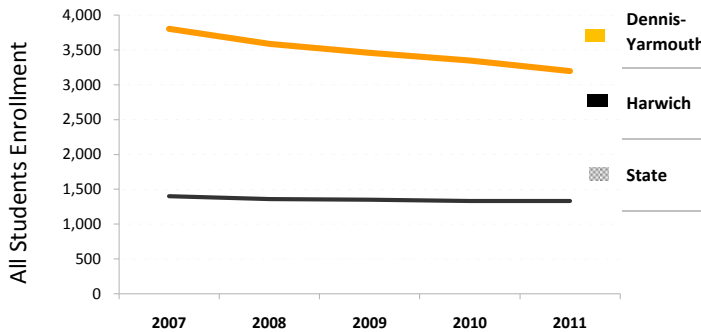
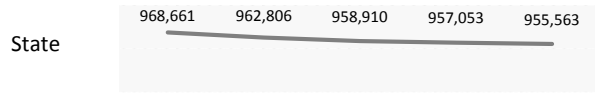
## District Context

**Your District:** Dennis-Yarmouth

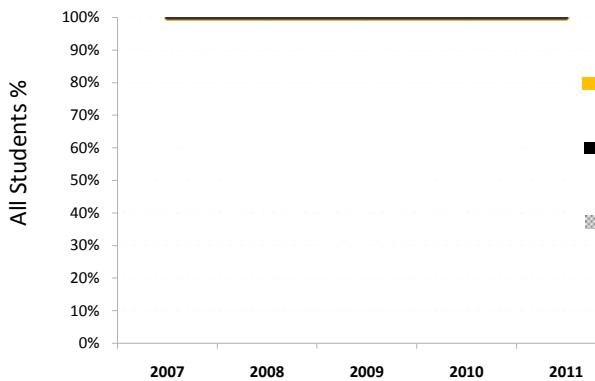
**Comparable District:** Harwich

**Select Subgroup:** All Students

### Total Enrollment and % of Enrollment

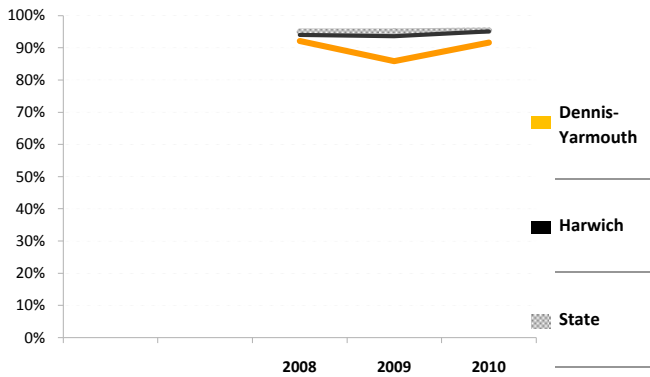


Enrollment	2007	2008	2009	2010	2011
All Students	3,803	3,586	3,461	3,349	3,199
All Students #	3,803	3,586	3,461	3,349	3,199
All Students	1,399	1,358	1,350	1,334	1,333
All Students #	1,399	1,358	1,350	1,334	1,333
All Students	968,661	962,806	958,910	957,053	955,563
All Students #	968,661	962,806	958,910	957,053	955,563



Enrollment	2007	2008	2009	2010	2011
All Students	3,803	3,586	3,461	3,349	3,199
All Students %	100%	100%	100%	100%	100%
All Students	1,399	1,358	1,350	1,334	1,333
All Students %	100%	100%	100%	100%	100%
All Students	968,661	962,806	958,910	957,053	955,563
All Students %	100%	100%	100%	100%	100%

### Stability Rate (Enrolled All Year)



	2008	2009	2010
Students Incl.	3,607	3,479	3,365
# Stable Students	3,322	2,985	3,084
% Stable	92%	86%	92%
Students Incl.	1,365	1,358	1,340
# Students Stable	1,283	1,271	1,274
% Stable	94%	94%	95%
Students Incl.	966,800	962,409	960,021
# Students Stable	919,253	914,601	915,278
% Stable	95%	95%	95%

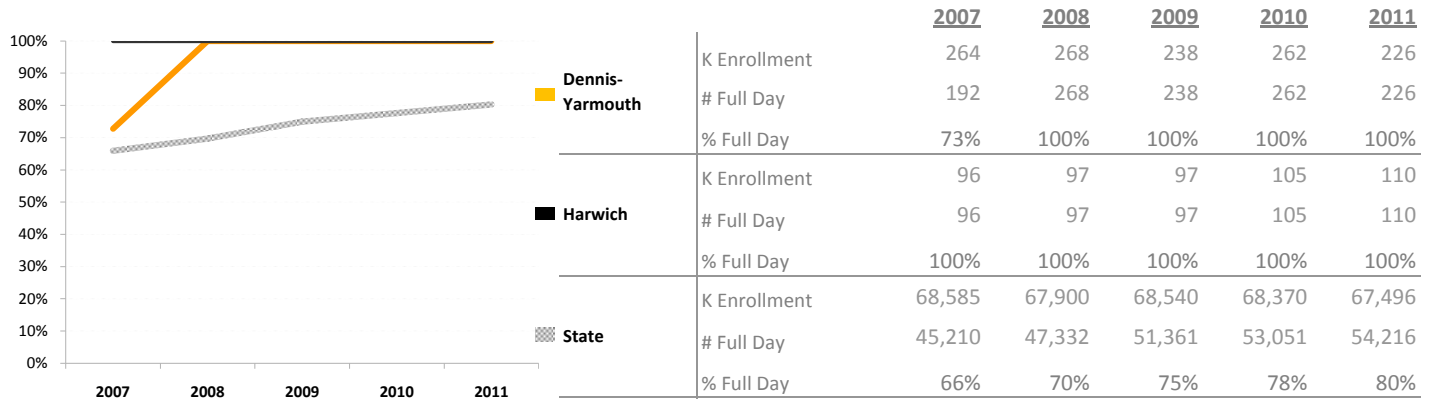
## District Context

**Your District:** Dennis-Yarmouth

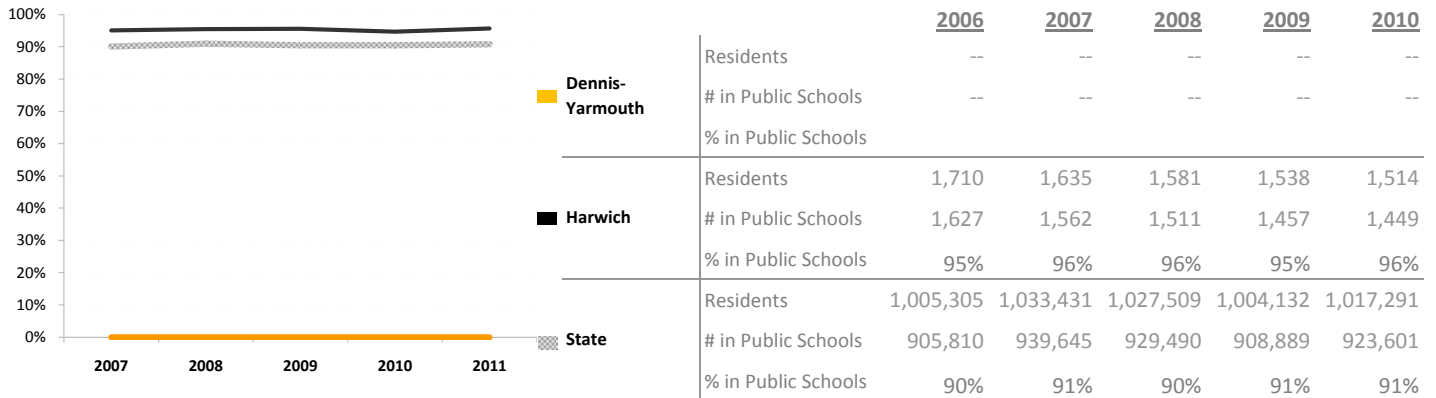
**Comparable District:** Harwich

**Select Subgroup:** All Students

### Percentage of Kindergarten Students Enrolled in Full Day Kindergarten



### Percentage of School-aged Residents Enrolled in Public School (available for all students only)



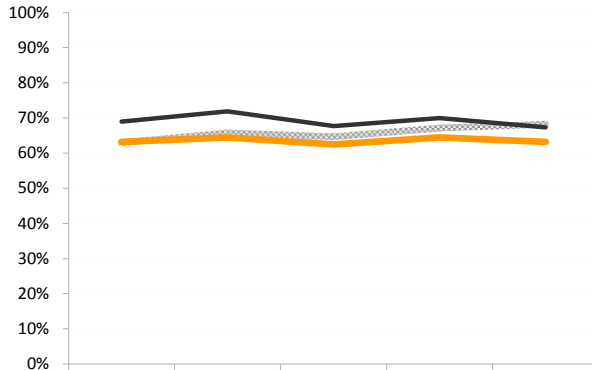
Your District: Dennis-Yarmouth  
Comparable District: Harwich

Select Grade: All Grades

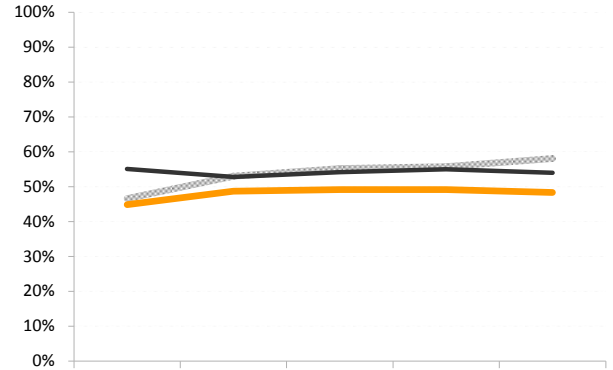
Select Subgroup: All Students

Percentage of students scoring at or above proficient

English Language Arts



Mathematics

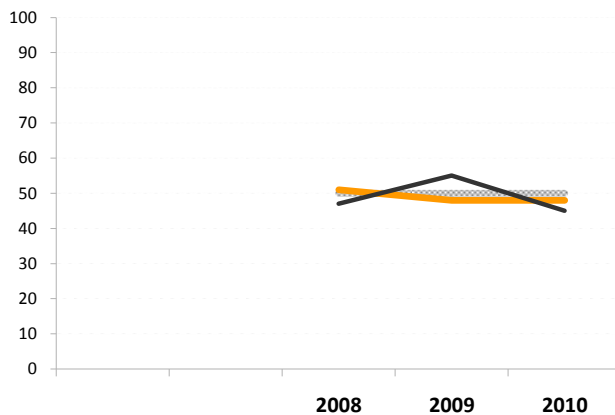


		2006	2007	2008	2009	2010
Dennis-Yarmouth	N	2,175	2,064	1,951	1,864	1,822
	#	1,374	1,331	1,219	1,202	1,152
	%	63%	64%	62%	64%	63%
Harwich	N	750	742	719	716	691
	#	517	533	487	501	465
	%	69%	72%	68%	70%	67%
State	N	512,227	506,516	501,242	499,025	498,668
	#	322,518	333,093	324,036	335,085	339,985
	%	63%	66%	65%	67%	68%

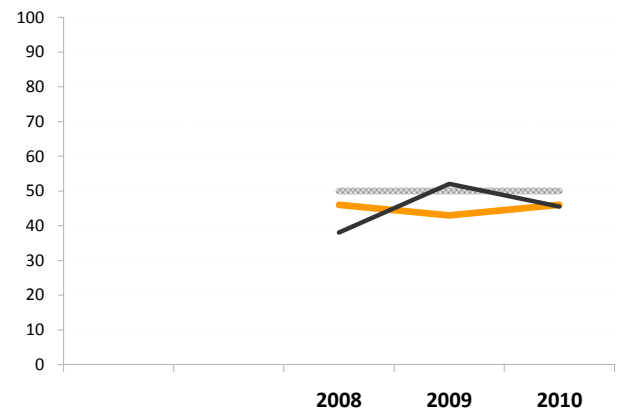
		2006	2007	2008	2009	2010
Dennis-Yarmouth	N	2,168	2,048	1,947	1,868	1,823
	#	973	998	957	919	882
	%	45%	49%	49%	49%	48%
Harwich	N	752	740	720	715	691
	#	414	391	390	393	373
	%	55%	53%	54%	55%	54%
State	N	512,087	505,812	501,970	499,717	498,632
	#	238,579	268,022	276,953	278,481	289,591
	%	47%	53%	55%	56%	58%

Median Student Growth Percentiles (SGP)

English Language Arts



Mathematics



		2008	2009	2010
Dennis-Yarmouth	N	1,329	1,446	1,399
	SGP	51.0	48.0	48.0
Harwich	N	480	561	544
	SGP	47.0	55.0	45.0
State	N	329,788	396,371	396,078
	SGP	50.0	50.0	50.0

		2008	2009	2010
Dennis-Yarmouth	N	1,332	1,456	1,402
	SGP	46.0	43.0	46.0
Harwich	N	482	565	546
	SGP	38.0	52.0	45.5
State	N	330,279	397,572	396,662
	SGP	50.0	50.0	50.0

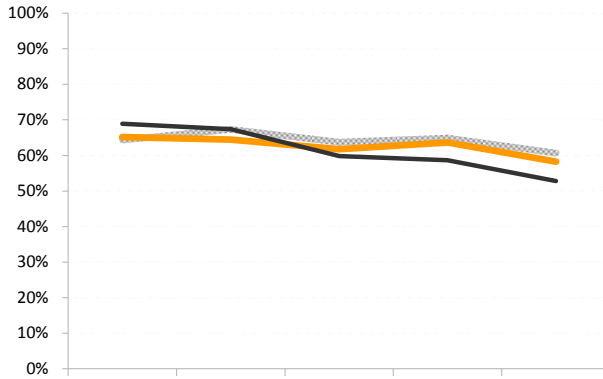
Your District: Dennis-Yarmouth  
Comparable District: Harwich

Select Grade: All Grades

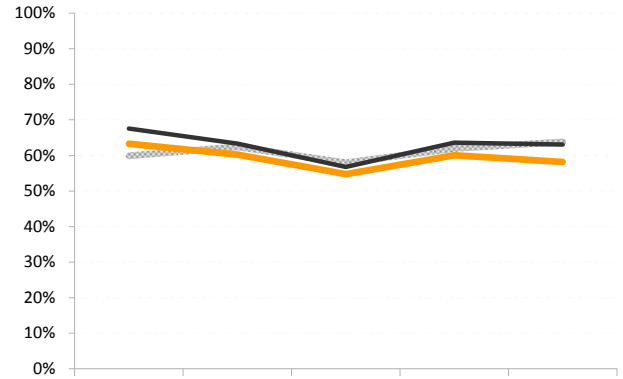
Select Subgroup: All Students

Percent of Students Averaging 2 or Above on Open Response Items

English Language Arts



Mathematics



		2006	2007	2008	2009	2010
■ Dennis-Yarmouth	N	2,175	2,064	1,951	1,864	1,822
	#	1,417	1,330	1,205	1,186	1,062
	%	65%	64%	62%	64%	58%
■ Harwich	N	750	742	719	716	691
	#	517	500	430	420	365
	%	69%	67%	60%	59%	53%
▨ State	N	512,227	506,516	501,242	499,025	498,668
	#	329,642	341,033	319,387	323,748	302,459
	%	64%	67%	64%	65%	61%

		2006	2007	2008	2009	2010
■ Dennis-Yarmouth	N	2,168	2,048	1,947	1,868	1,823
	#	1,372	1,234	1,066	1,122	1,061
	%	63%	60%	55%	60%	58%
■ Harwich	N	752	740	720	715	691
	#	508	469	409	455	436
	%	68%	63%	57%	64%	63%
▨ State	N	512,087	505,812	501,970	499,717	498,632
	#	306,677	315,947	290,931	309,559	318,104
	%	60%	62%	58%	62%	64%

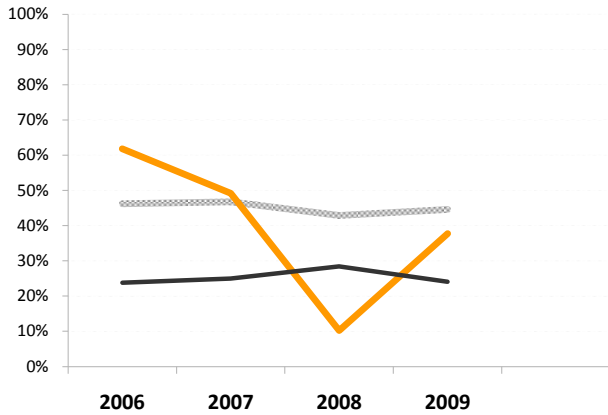
Your District: Dennis-Yarmouth  
Comparable District: Harwich

Select Grade: All Grades

Select Subgroup: All Students

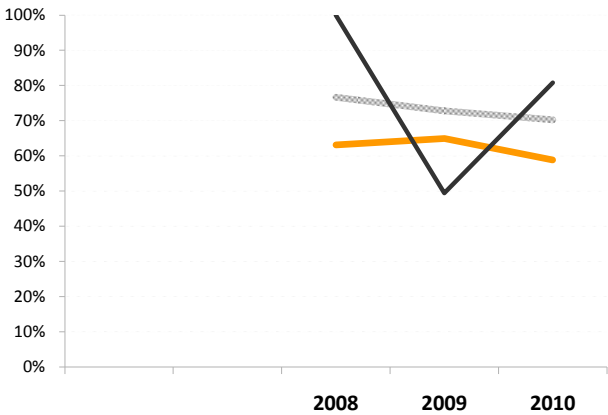
Grade-specific Indicators

Grade 8 Enrollment in Algebra



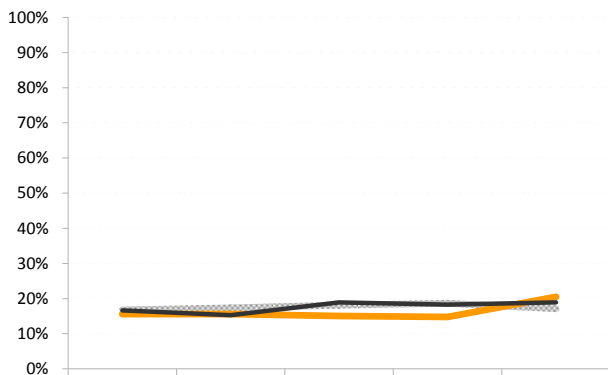
		<u>2006</u>	<u>2007</u>	<u>2008</u>	<u>2009</u>
Dennis-Yarmouth	N	270	293	265	286
	#	167	144	27	108
	%	62%	49%	10%	38%
Harwich	N	105	108	88	83
	#	25	27	25	20
	%	24%	25%	28%	24%
State	N	69,774	66,633	65,311	65,727
	#	32,268	31,133	28,012	29,322
	%	46%	47%	43%	45%

Percentage of High School Graduates Completed MASSCore



		<u>2008</u>	<u>2009</u>	<u>2010</u>
Dennis-Yarmouth	N	217	217	204
	#	137	141	120
	%	63%	65%	59%
Harwich	N	95	91	94
	#	95	45	76
	%	100%	49%	81%
State	N	42,042	63,700	63,072
	#	32,218	46,374	44,311
	%	77%	73%	70%

Percentage of Juniors/Seniors Enrolled in at least one Advanced Placement Course (All Students Only)



		<u>2006</u>	<u>2007</u>	<u>2008</u>	<u>2009</u>	<u>2010</u>
Dennis-Yarmouth	N	576	540	538	527	473
	#	90	84	81	78	97
	%	16%	16%	15%	15%	21%
Harwich	N	216	209	211	202	196
	#	36	32	40	37	37
	%	17%	15%	19%	18%	19%
State	N	141,619	143,249	145,093	143,743	142,235
	#	23,728	24,869	26,355	26,835	24,325
	%	17%	17%	18%	19%	17%



**Curriculum and Instruction  
Assessment  
Achievement Gap**

Your District  
Comparable District

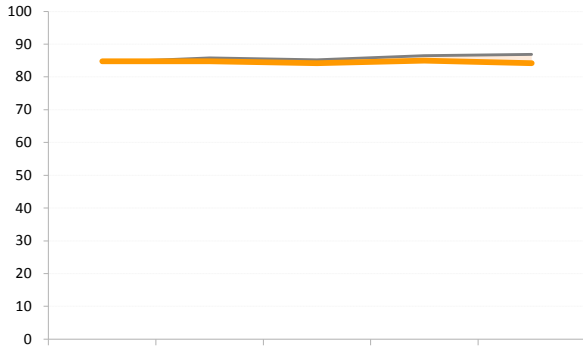
Dennis-Yarmouth  
Harwich

Select Grade: **All Grades**

Select Subgroup: **All Students**

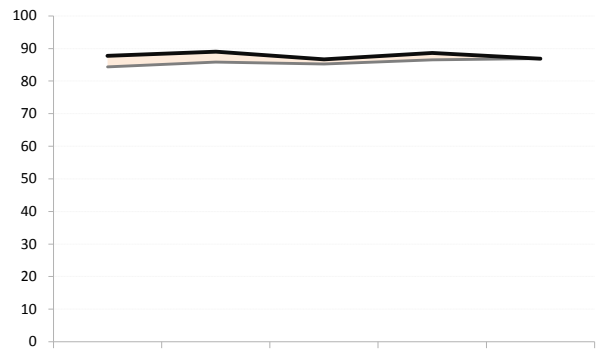
**CPI Achievement Gap - English Language Arts**

Dennis-Yarmouth



		2006	2007	2008	2009	2010
State	N	512,227	506,516	501,242	499,025	498,668
	CPI	84.4	85.8	85.2	86.5	86.9
Dennis-Yarmouth	N	2,175	2,064	1,951	1,864	1,822
	CPI	84.8	84.8	84.2	85.0	84.2
CPI Gap		<b>0.4</b>	<b>-1.0</b>	<b>-1.0</b>	<b>-1.5</b>	<b>-2.7</b>

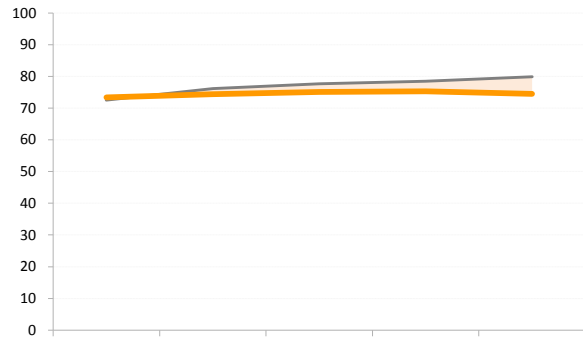
Harwich



		2006	2007	2008	2009	2010
State	N	512,227	506,516	501,242	499,025	498,668
	CPI	84.4	85.8	85.2	86.5	86.9
Harwich	N	750	742	719	716	691
	CPI	87.8	89.0	86.7	88.6	86.9
CPI Gap		<b>3.4</b>	<b>3.2</b>	<b>1.5</b>	<b>2.1</b>	<b>0.0</b>

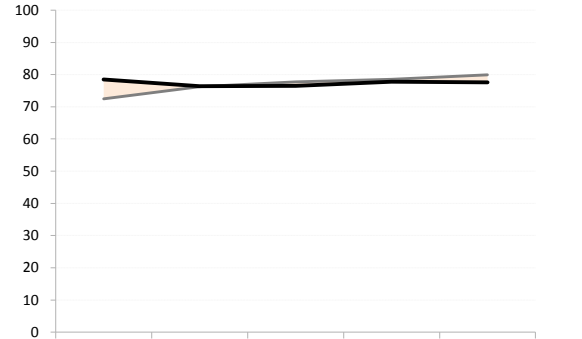
**CPI Achievement Gap - Mathematics**

Dennis-Yarmouth



		2006	2007	2008	2009	2010
State	N	512,087	505,812	501,970	499,717	498,632
	CPI	72.5	76.2	77.7	78.5	79.9
Dennis-Yarmouth	N	2,168	2,048	1,947	1,868	1,823
	CPI	73.3	74.4	75.1	75.3	74.5
CPI Gap		<b>0.8</b>	<b>-1.8</b>	<b>-2.6</b>	<b>-3.2</b>	<b>-5.4</b>

Harwich



		2006	2007	2008	2009	2010
State	N	512,087	505,812	501,970	499,717	498,632
	CPI	72.5	76.2	77.7	78.5	79.9
Harwich	N	752	740	720	715	691
	CPI	78.5	76.4	76.5	77.8	77.6
CPI Gap		<b>6.0</b>	<b>0.2</b>	<b>-1.2</b>	<b>-0.7</b>	<b>-2.3</b>

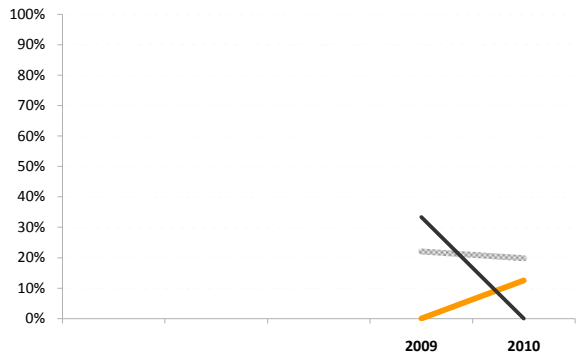
Your District: Dennis-Yarmouth

Comparable District: Harwich

**District Superintendent Turnover Rate**

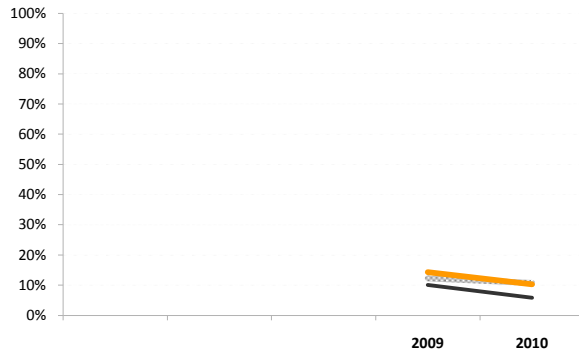
		2009	2010
<b>Dennis-Yarmouth</b>	Superintendent	1	1
	Turnover #	0	0
	Turnover Rate	0%	0%
<b>Harwich</b>	Superintendent	1	1
	Turnover #	0	0
	Turnover Rate	0%	0%
<b>State</b>	Superintendent	390	384
	Turnover #	77	86
	Turnover Rate	20%	22%

**School Principal Turnover Rate**



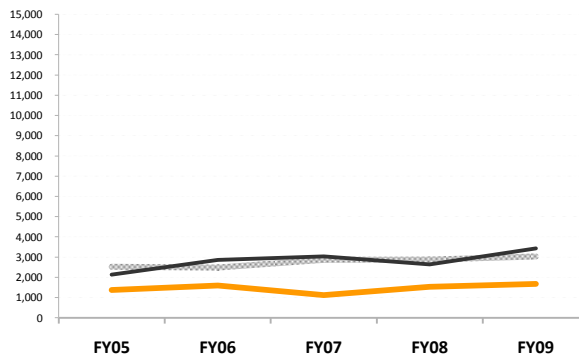
		2009	2010
<b>Dennis-Yarmouth</b>	Principals	8	8
	Turnover #	0	1
	Turnover Rate	0%	13%
<b>Harwich</b>	Principals	3	3
	Turnover #	1	0
	Turnover Rate	33%	0%
<b>State</b>	Principals	1,526	1,548
	Turnover #	336	307
	Turnover Rate	22%	20%

**Teacher Turnover Rate**



		2009	2010
<b>Dennis-Yarmouth</b>	Teachers	308	291
	Turnover #	44	30
	Turnover Rate	14%	10%
<b>Harwich</b>	Teachers	119	120
	Turnover #	12	7
	Turnover Rate	10%	6%
<b>State</b>	Teachers	64,026	65,020
	Turnover #	8,933	7,820
	Turnover Rate	12%	11%

**Professional Development Spending Per Teacher (FTE)**

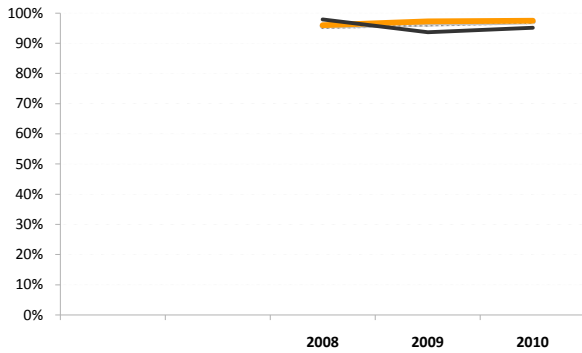


		FY05	FY06	FY07	FY08	FY09
<b>Dennis-Yarmouth</b>	Teachers (FTE)	348.8	323.7	309.2	300.1	285.5
	PD Expenditure	\$480K	\$514K	\$347K	\$458K	\$478K
	Per Teacher	\$1,375	\$1,588	\$1,122	\$1,525	\$1,673
<b>Harwich</b>	Teachers (FTE)	126.8	121.7	119.6	116.9	117.5
	PD Expenditure	\$270K	\$348K	\$364K	\$309K	\$404K
	Per Teacher	\$2,130	\$2,862	\$3,041	\$2,645	\$3,434
<b>State</b>	Teachers (FTE)	73,394.3	73,593.1	73,176.0	70,716.6	70,395.9
	PD Expenditure	\$184.7M	\$182.6M	\$209.3M	\$203.7M	\$213.5M
	Per Teacher	\$2,516	\$2,482	\$2,860	\$2,881	\$3,033



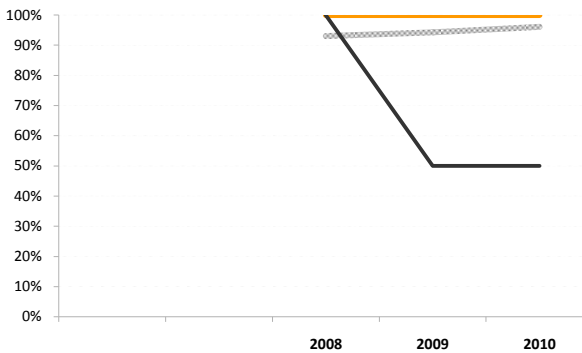
**Your District:** Dennis-Yarmouth  
**Comparable District:** Harwich

**% of Core Academic Classes Taught by Highly Qualified Teachers**



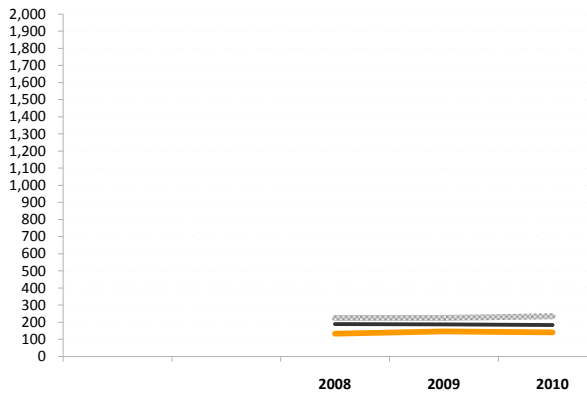
	2008	2009	2010
<b>Dennis-Yarmouth</b> Core Academic Classes	1,360	1,117	1,081
<b>Dennis-Yarmouth</b> Highly Qualified Teachers	96%	97%	98%
<b>Harwich</b> Core Academic Classes	487	495	447
<b>Harwich</b> Highly Qualified Teachers	98%	94%	95%
<b>State</b> Core Academic Classes	275,949	279,742	280,489
<b>State</b> Highly Qualified Teachers	96%	97%	97%

**% of Grade 7 or 8 Math Classes Taught by Highly Qualified Math Teachers**



	2008	2009	2010
<b>Dennis-Yarmouth</b> Math Classes (Grade 7/8)	38	35	33
<b>Dennis-Yarmouth</b> Highly Qualified Teachers	100%	100%	100%
<b>Harwich</b> Math Classes (Grade 7/8)	10	5	5
<b>Harwich</b> Highly Qualified Teachers	100%	50%	50%
<b>State</b> Math Classes (Grade 7/8)	7,563	8,372	8,797
<b>State</b> Highly Qualified Teachers	93%	94%	96%

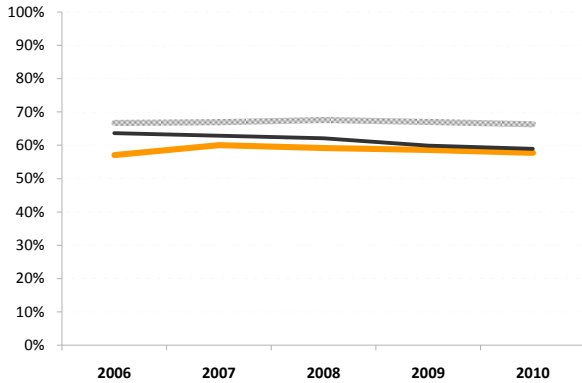
**Student-to-Arts-Teacher ratio (K-8 art, music, dance, drama)**



	2008	2009	2010
<b>Dennis-Yarmouth</b> K-8 Enrollment	2,514	2,428	2,382
<b>Dennis-Yarmouth</b> K-8 Arts Teachers (FTE)	18.8	16.6	16.9
<b>Dennis-Yarmouth</b> Students per Teacher	133.9	146.7	140.9
<b>Harwich</b> K-8 Enrollment	934	937	923
<b>Harwich</b> K-8 Arts Teachers (FTE)	4.9	5.0	5.0
<b>Harwich</b> Students per Teacher	189.5	187.8	184.6
<b>State</b> K-8 Enrollment	640,391	639,019	637,858
<b>State</b> K-8 Arts Teachers (FTE)	2,839.4	2,828.7	2,717.0
<b>State</b> Students per Teacher	225.5	225.9	234.8

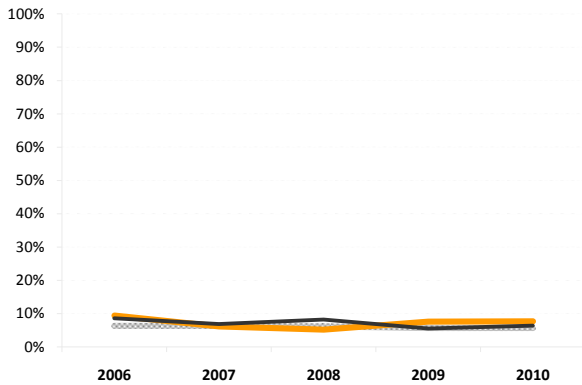
**Your District:** Dennis-Yarmouth  
**Comparable District:** Harwich

### Student Attendance (% of students absent fewer than 10 days each year)



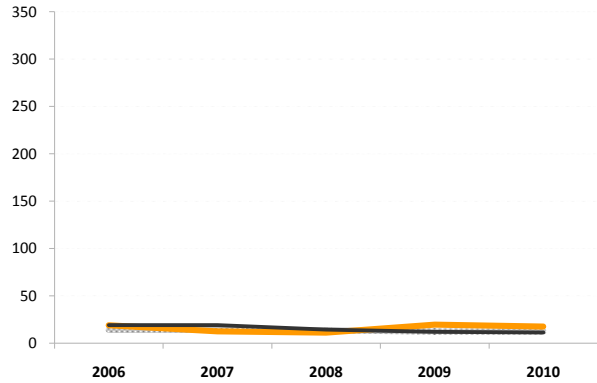
	2006	2007	2008	2009	2010
<b>Dennis-Yarmouth</b>					
Students Incl.	4,197	4,000	3,798	3,672	3,525
# Absent <10	2,395	2,401	2,248	2,152	2,036
% Absent <10	57%	60%	59%	59%	58%
<b>Harwich</b>					
Students Incl.	1,526	1,468	1,424	1,389	1,382
# Absent <10	971	923	884	832	815
% Absent <10	64%	63%	62%	60%	59%
<b>State</b>					
Students Incl.	1,019,881	1,012,942	1,005,353	999,363	997,187
# Absent <10	680,194	677,889	679,294	669,480	661,347
% Absent <10	67%	67%	68%	67%	66%

### Percentage of Students Suspended Out-of-School At Least Once



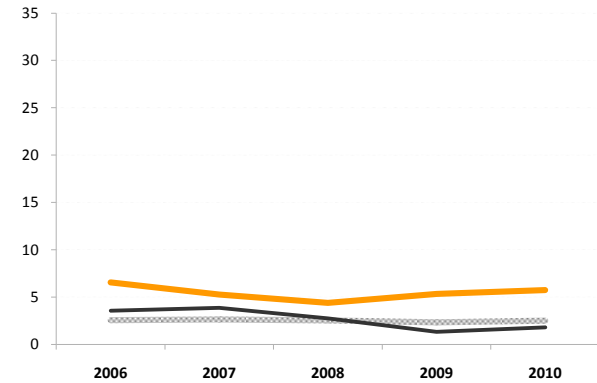
	2006	2007	2008	2009	2010
<b>Dennis-Yarmouth</b>					
Students Incl.	3,956	3,803	3,586	3,461	3,349
# Suspended	373	235	185	261	256
% Suspended	9%	6%	5%	8%	8%
<b>Harwich</b>					
Students Incl.	1,441	1,399	1,358	1,350	1,334
# Suspended	124	96	112	75	85
% Suspended	9%	7%	8%	6%	6%
<b>State</b>					
Students Incl.	972,374	968,661	963,128	961,272	957,064
# Suspended	61,074	60,983	59,195	54,642	55,058
% Suspended	6%	6%	6%	6%	6%

### Number of Incidents Resulting in Out-of-School Suspensions



	2006	2007	2008	2009	2010
<b>Dennis-Yarmouth</b>					
Students Incl.	3,956	3,803	3,586	3,461	3,349
# of Incidents	759	481	400	677	590
Per 100 Students	19.2	12.6	11.2	19.6	17.6
<b>Harwich</b>					
Students Incl.	1,441	1,399	1,358	1,350	1,334
# of Incidents	278	269	195	165	153
Per 100 Students	19.3	19.2	14.4	12.2	11.5
<b>State</b>					
Students Incl.	972,374	968,661	963,128	961,272	957,064
# of Incidents	138,864	137,987	132,666	119,938	121,215
Per 100 Students	14.3	14.2	13.8	12.5	12.7

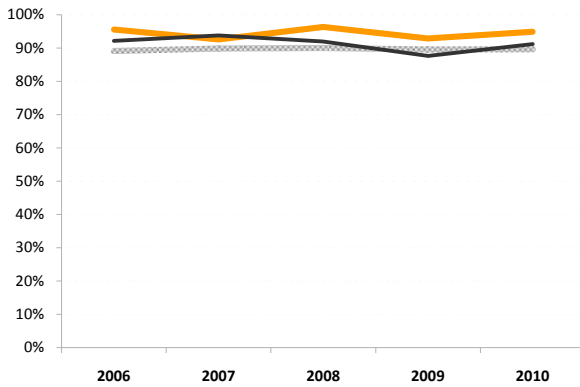
### Number of Criminal, Drug- or Tobacco-Related, and Violent Incidents Resulting in Out-of-School Suspensions



	2006	2007	2008	2009	2010
<b>Dennis-Yarmouth</b>					
Students Incl.	3,956	3,803	3,586	3,461	3,349
# of Incidents	259	200	157	184	192
Per 100 Students	6.5	5.3	4.4	5.3	5.7
<b>Harwich</b>					
Students Incl.	1,441	1,399	1,358	1,350	1,334
# of Incidents	51	54	37	18	24
Per 100 Students	3.5	3.9	2.7	1.3	1.8
<b>State</b>					
Students Incl.	972,374	968,661	963,128	961,272	957,064
# of Incidents	24,733	25,408	24,437	22,328	24,053
Per 100 Students	2.5	2.6	2.5	2.3	2.5

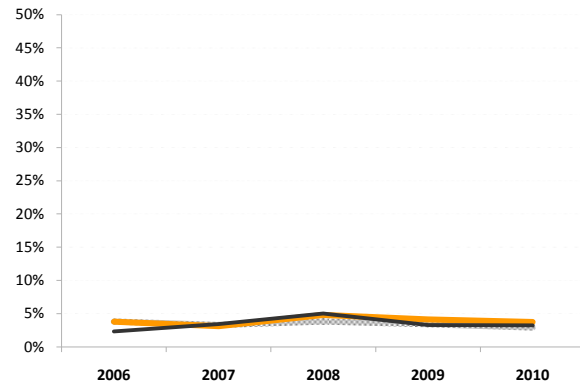
**Your District:** Dennis-Yarmouth  
**Comparable District:** Harwich

## 9th to 10th Grade Promotion Rate (First-time 9th graders only)



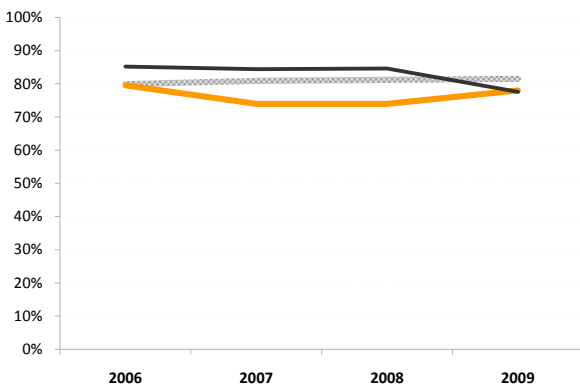
	2006	2007	2008	2009	2010	
<b>Dennis-Yarmouth</b>	Students Incl.	269	268	219	225	216
	# Promoted	257	248	211	209	205
	% Promoted	96%	93%	96%	93%	95%
<b>Harwich</b>	Students Incl.	114	96	87	81	91
	# Promoted	105	90	80	71	83
	% Promoted	92%	94%	92%	88%	91%
<b>State</b>	Students Incl.	76,345	75,668	73,333	73,109	73,182
	# Promoted	68,030	67,972	66,025	65,461	65,580
	% Promoted	89%	90%	90%	90%	90%

## Annual Dropout Rate



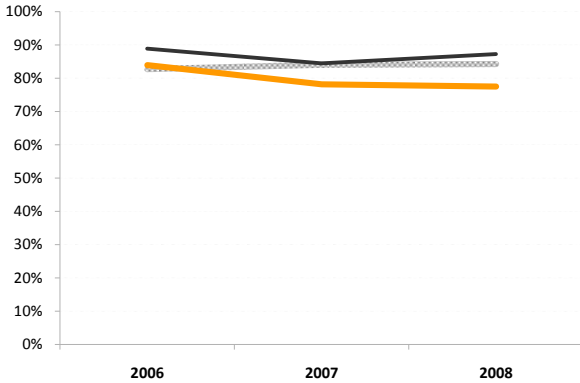
	2005	2006	2007	2008	2009	
<b>Dennis-Yarmouth</b>	# Dropouts	43	34	52	41	36
	% Dropouts	3.8%	3.1%	4.8%	4.1%	3.7%
<b>Harwich</b>	# Dropouts	10	15	21	13	12
	% Dropouts	2.3%	3.4%	5.0%	3.3%	3.2%
<b>State</b>	# Dropouts	11,145	9,910	11,436	9,959	8,585
	% Dropouts	3.8%	3.3%	3.8%	3.4%	2.9%

## 4-year Cohort Graduation Rate



	2006	2007	2008	2009	
<b>Dennis-Yarmouth</b>	Students Incl.	292	269	285	273
	% Graduated (4 Yrs)	79.5%	74.0%	74.0%	78.0%
<b>Harwich</b>	Students Incl.	108	109	117	116
	% Graduated (4 Yrs)	85.2%	84.4%	84.6%	77.6%
<b>State</b>	Students Incl.	74,380	75,912	77,383	77,038
	% Graduated (4 Yrs)	79.9%	80.9%	81.2%	81.5%

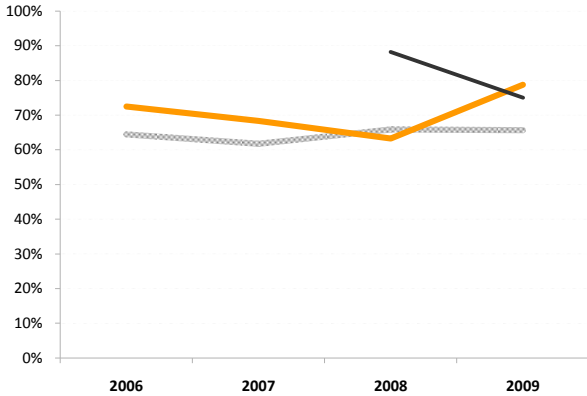
## 5-year Cohort Graduation Rate



	2006	2007	2008	
<b>Dennis-Yarmouth</b>	Students Incl.	292	269	285
	% Graduated (5 Yrs)	83.9%	78.1%	77.5%
<b>Harwich</b>	Students Incl.	108	109	117
	% Graduated (5 Yrs)	88.9%	84.4%	87.2%
<b>State</b>	Students Incl.	74,380	75,912	77,383
	% Graduated (5 Yrs)	82.7%	84.0%	84.2%

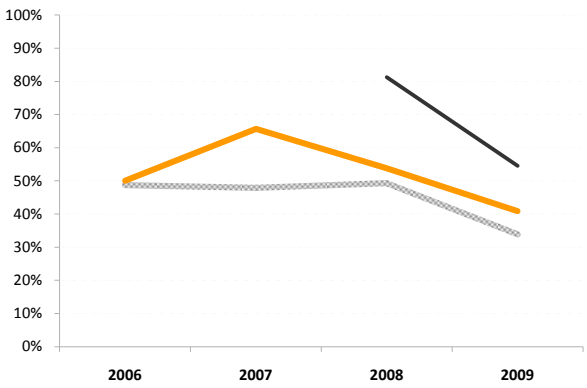
**Your District:** Dennis-Yarmouth  
**Comparable District:** Harwich

**English language learners making progress on the Massachusetts English Proficiency Assessment (MEPA)**



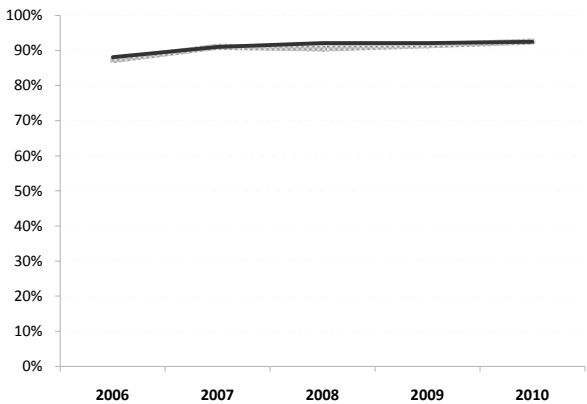
	2006	2007	2008	2009
<b>Dennis-Yarmouth</b>				
Students Incl.	80	82	87	66
# Making Progress	58	56	55	52
% Making Progress	73%	68%	63%	79%
<b>Harwich</b>				
Students Incl.	5	--	17	20
# Making Progress	--	--	15	15
% Making Progress			88%	75%
<b>State</b>				
Students Incl.	27,719	28,571	40,852	30,420
# Making Progress	17,858	17,639	26,910	19,982
% Making Progress	64%	62%	66%	66%

**ELL students who attained English Language Proficiency**



	2006	2007	2008	2009
<b>Dennis-Yarmouth</b>				
Students Incl.	68	67	78	120
# Attained	34	44	42	49
% Attained	50%	66%	54%	41%
<b>Harwich</b>				
Students Incl.	5	--	16	33
# Attained	--	--	13	18
% Attained			81%	55%
<b>State</b>				
Students Incl.	23,569	24,390	37,178	52,472
# Attained	11,480	11,673	18,340	17,775
% Attained	49%	48%	49%	34%

**Return to Classroom Rate from School Nurse**



	2006	2007	2008	2009	2010
<b>Dennis-Yarmouth</b>					
Students Incl.	--	--	--	--	--
# Returned	--	--	--	--	--
%					
<b>Harwich</b>					
Students Incl.	12,095	15,100	17,025	17,384	16,284
# Returned	10,653	13,743	15,673	16,003	15,058
%	88%	91%	92%	92%	92%
<b>State</b>					
Students Incl.	3,532,216	4,720,997	4,414,450	3,969,277	4,131,112
# Returned	3,081,557	4,299,019	3,999,297	3,630,980	3,823,451
%	87%	91%	91%	91%	93%

**Determination of need for special education technical assistance or intervention**

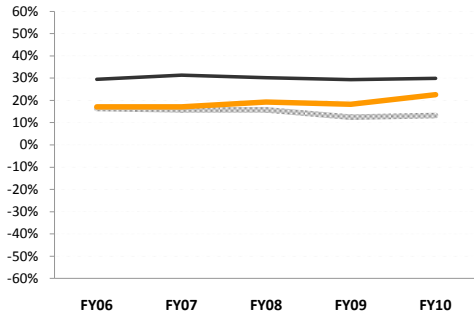
District	2008-09
Dennis-Yarmouth	Needs Intervention
Harwich	Meets Requirements

<b>Level 1</b>	Meets Requirements
<b>Level 2</b>	At Risk
<b>Level 3</b>	Needs Technical Assistance
<b>Level 4</b>	Needs Intervention
<b>Level 5</b>	Needs Substantial Intervention

Your District: Dennis-Yarmouth

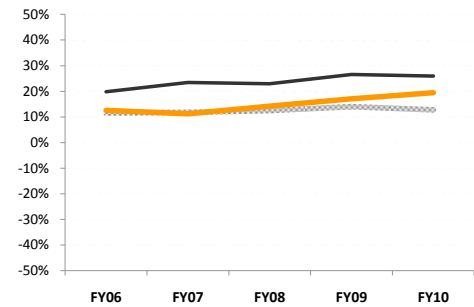
Comparable District: Harwich

**Percent Net School Spending above Foundation Budget**



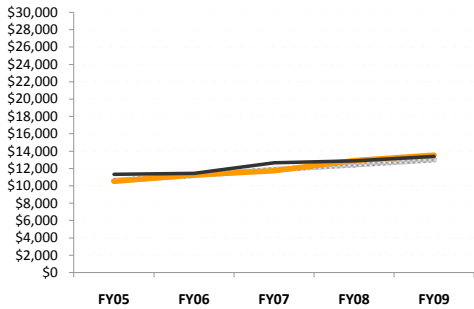
Year	Dennis-Yarmouth			Harwich			State		
	Foundation Budget	Actual Spending	%	Foundation Budget	Actual Spending	%	Foundation Budget	Actual Spending	%
FY06	\$31.6M	\$38.0M	17%	\$11.2M	\$15.8M	29%	\$7.6B	\$9.0B	16%
FY07	\$31.9M	\$38.5M	17%	\$11.7M	\$17.0M	31%	\$8.0B	\$9.5B	16%
FY08	\$32.9M	\$40.7M	19%	\$12.0M	\$17.2M	30%	\$8.4B	\$10.0B	16%
FY09	\$33.9M	\$41.5M	18%	\$12.4M	\$17.5M	29%	\$8.8B	\$10.1B	12%
FY10	\$34.7M	\$44.8M	23%	\$12.6M	\$18.0M	30%	\$9.1B	\$10.5B	13%

**Percent Actual Net School Spending above Required Net School Spending**



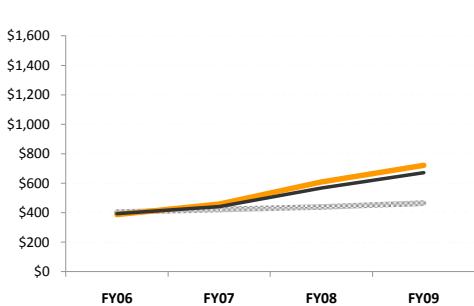
Year	Dennis-Yarmouth			Harwich			State		
	Required Spending	Actual Spending	%	Required Spending	Actual Spending	%	Required Spending	Actual Spending	%
FY06	\$33.2M	\$38.0M	13%	\$12.7M	\$15.8M	20%	\$8.0B	\$9.0B	12%
FY07	\$34.2M	\$38.5M	11%	\$13.1M	\$17.0M	23%	\$8.4B	\$9.5B	12%
FY08	\$34.9M	\$40.7M	14%	\$13.3M	\$17.2M	23%	\$8.7B	\$10.0B	13%
FY09	\$34.4M	\$41.5M	17%	\$12.8M	\$17.5M	27%	\$8.7B	\$10.1B	14%
FY10	\$36.1M	\$44.8M	19%	\$13.3M	\$18.0M	26%	\$9.1B	\$10.5B	13%

**Total Per Pupil Expenditures**



Year	Dennis-Yarmouth			Harwich			State		
	Pupils (FTE)	Total Expenditures	Per Pupil	Pupils (FTE)	Total Expenditures	Per Pupil	Pupils (FTE)	Total Expenditures	Per Pupil
FY05	4,294.6	\$45.1M	\$10,511	1,633.6	\$18.5M	\$11,311	1,000,473.4	\$10.6B	\$10,600
FY06	4,177.7	\$47.0M	\$11,254	1,619.8	\$18.5M	\$11,428	998,904.8	\$11.2B	\$11,211
FY07	3,990.3	\$46.8M	\$11,726	1,581.3	\$20.0M	\$12,650	994,074.1	\$11.8B	\$11,858
FY08	3,844.6	\$49.7M	\$12,922	1,579.3	\$20.3M	\$12,871	989,656.7	\$12.3B	\$12,453
FY09	3,803.9	\$51.4M	\$13,525	1,544.5	\$20.7M	\$13,384	985,165.3	\$12.8B	\$13,017

**In-district Transportation Cost Per Pupil**



Year	Dennis-Yarmouth			Harwich			State		
	Pupils In-District (FTE)	Total Transportation Expenditures	Per Pupil	Pupils In-District (FTE)	Total Transportation Expenditures	Per Pupil	Pupils In-District (FTE)	Total Transportation Expenditures	Per Pupil
FY06	3,892.7	\$1.5M	\$388	1,433.2	\$564K	\$393	947,345.1	\$383M	\$404
FY07	3,695.1	\$1.7M	\$460	1,384.4	\$611K	\$441	940,376.0	\$397M	\$422
FY08	3,513.2	\$2.1M	\$609	1,353.1	\$767K	\$567	934,755.3	\$410M	\$439
FY09	3,394.3	\$2.5M	\$722	1,316.0	\$884K	\$671	926,549.7	\$432M	\$466