



District Analysis and Review Tool (DART)

Select your district. If desired, select a "comparable" district, no district, or any other district.

Dennis-Yarmouth
Barnstable

Table of Contents

- [District Context](#)
- [Curriculum and Assessment](#)
- [Curriculum and Assessment - Achievement Gap](#)
- [Leadership, Human Resources, and Professional Development](#)
- [Student Support](#)
- [Finance and Asset Management](#)

Resources

- [Aligned with District Standards and Indicators](#)
- [User Guide](#)
- [DART for Schools](#)
- [DART Detail: Finance and Staffing](#)
- [DART Webpage](#)

	2010 NCLB Accountability Status		District Assistance Level
	English Language Arts	Mathematics	
Dennis-Yarmouth	Improvement Year 1 - Aggregate	Corrective Action - Subgroups	Level 3
Barnstable			Level 1

*Districts are most similar to your district in terms of grade span, enrollment, and special population.
Orange-shaded row: Your district **Blue-shaded row:** Highest performing of the other 10 districts in 2009 and 2010 .

Comparable Districts Overview	Grade span	2010-11 October Enrollment				2010 MCAS % Advanced/Proficient		2010 MCAS Growth	
		Total Enrollment	Low Income	SPED	LEP	ELA	Math	ELA	Math
		Attleboro*	PK - 12	5,855	30.8	16.4	4.7	69%	62%
Dennis-Yarmouth*	PK - 12	3,199	38.1	15.9	4.9	63%	48%	48.0	46.0
Gardner*	PK - 12	2,563	49.2	19.2	3.8	64%	48%	47.0	47.0
Leominster*	PK - 12	6,214	43.9	17.2	5.9	59%	55%	45.0	47.0
Medford*	PK - 12	4,849	33.4	18.7	6.7	64%	50%	49.0	48.0
Milford*	PK - 12	4,185	28.1	15.0	6.2	71%	59%	57.0	51.0
Norwood*	PK - 12	3,454	26.0	16.2	4.7	71%	58%	51.0	52.0
Quincy*	PK - 12	9,125	45.1	15.5	12.1	67%	55%	55.0	50.0
Rockland*	PK - 12	2,260	35.9	16.8	1.8	59%	45%	45.0	46.0
Stoughton*	PK - 12	3,777	29.0	14.6	5.4	70%	64%	48.0	52.0
West Springfield*	PK - 12	3,932	46.4	20.3	7.4	60%	58%	41.0	46.0

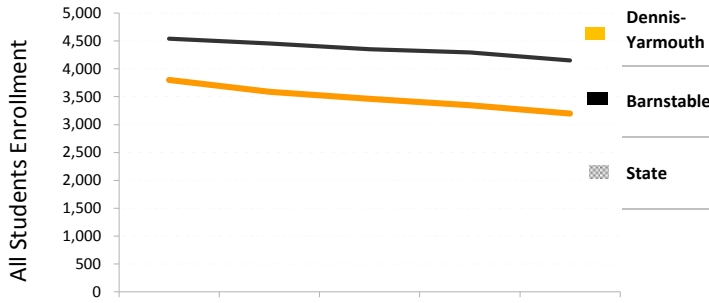
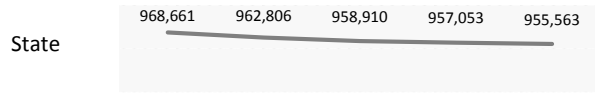
District Context

Your District: Dennis-Yarmouth

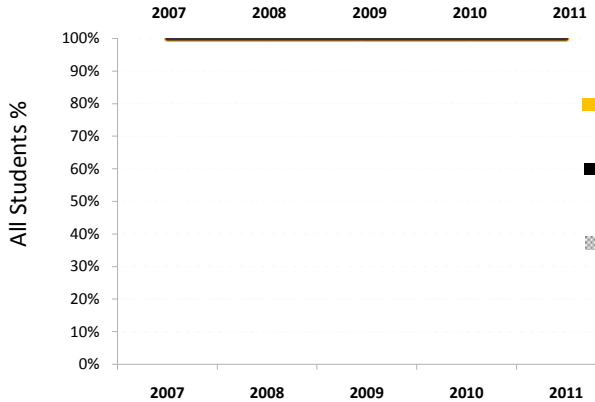
Comparable District: Barnstable

Select Subgroup: All Students

Total Enrollment and % of Enrollment

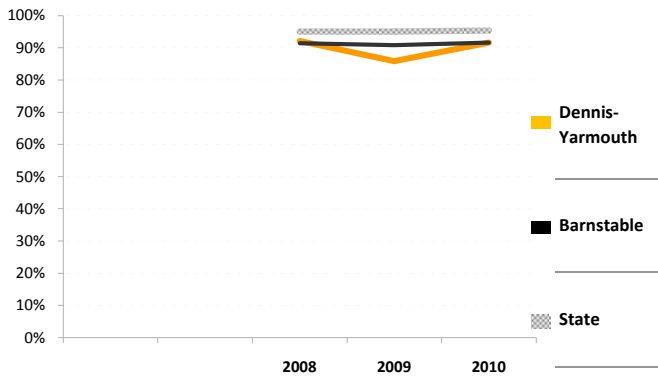


Enrollment	2007	2008	2009	2010	2011
Dennis-Yarmouth					
All Students	3,803	3,586	3,461	3,349	3,199
All Students #	3,803	3,586	3,461	3,349	3,199
Barnstable					
All Students	4,543	4,457	4,354	4,293	4,153
All Students #	4,543	4,457	4,354	4,293	4,153
State					
All Students	968,661	962,806	958,910	957,053	955,563
All Students #	968,661	962,806	958,910	957,053	955,563



Enrollment	2007	2008	2009	2010	2011
Dennis-Yarmouth					
All Students	3,803	3,586	3,461	3,349	3,199
All Students %	100%	100%	100%	100%	100%
Barnstable					
All Students	4,543	4,457	4,354	4,293	4,153
All Students %	100%	100%	100%	100%	100%
State					
All Students	968,661	962,806	958,910	957,053	955,563
All Students %	100%	100%	100%	100%	100%

Stability Rate (Enrolled All Year)



	2008	2009	2010
Dennis-Yarmouth			
Students Incl.	3,607	3,479	3,365
# Stable Students	3,322	2,985	3,084
% Stable	92%	86%	92%
Barnstable			
Students Incl.	4,520	4,416	4,354
# Students Stable	4,130	4,011	3,988
% Stable	91%	91%	92%
State			
Students Incl.	966,800	962,409	960,021
# Students Stable	919,253	914,601	915,278
% Stable	95%	95%	95%

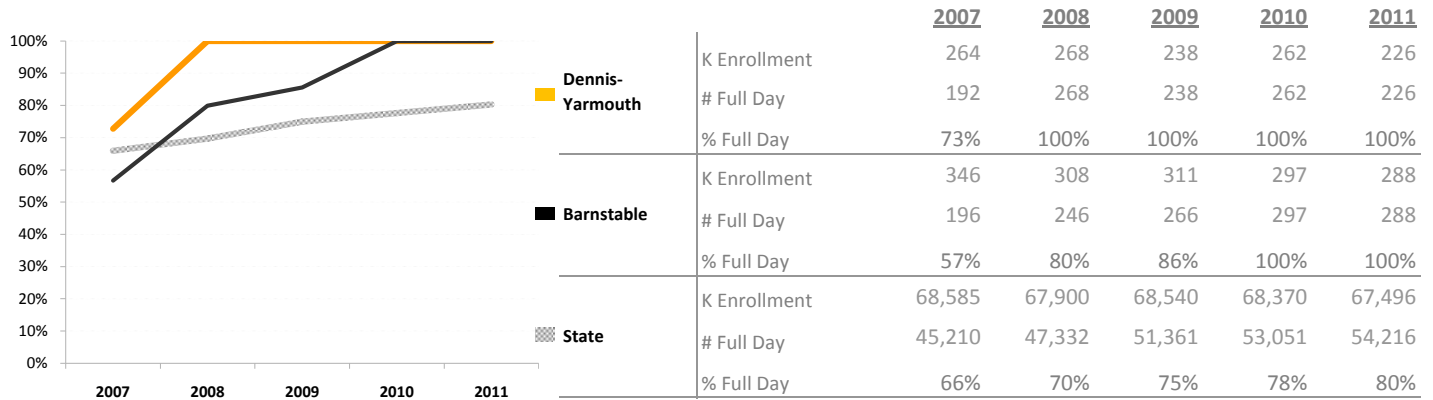
District Context

Your District: Dennis-Yarmouth

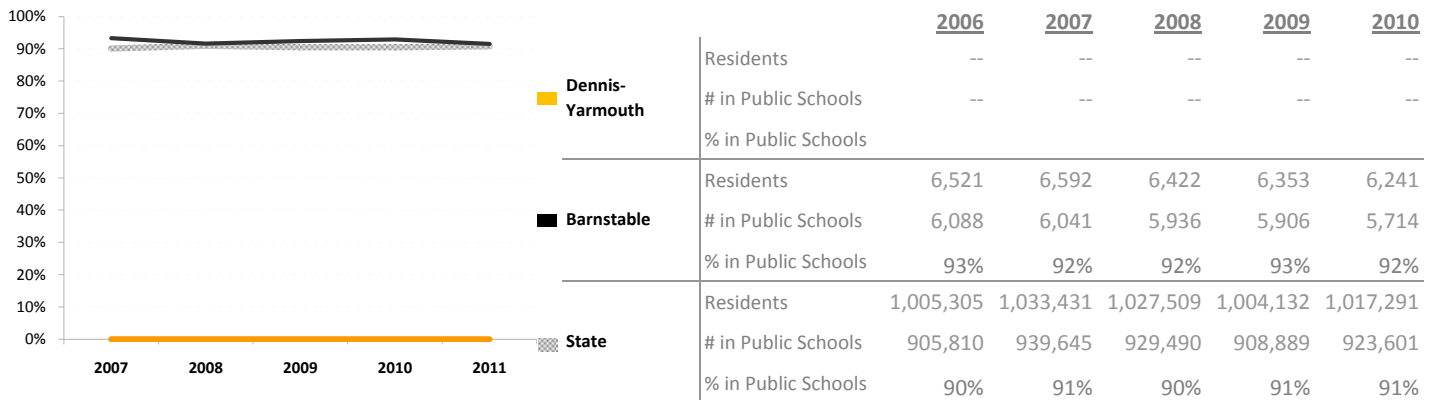
Comparable District: Barnstable

Select Subgroup: All Students

Percentage of Kindergarten Students Enrolled in Full Day Kindergarten



Percentage of School-aged Residents Enrolled in Public School (available for all students only)



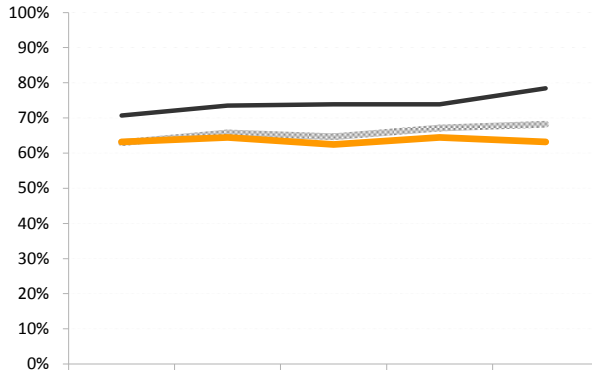
Your District: Dennis-Yarmouth
Comparable District: Barnstable

Select Grade: All Grades

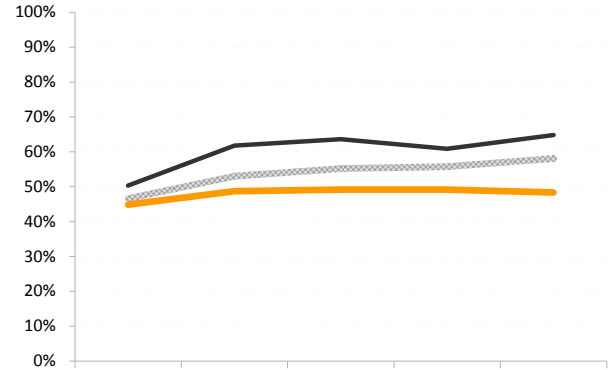
Select Subgroup: All Students

Percentage of students scoring at or above proficient

English Language Arts



Mathematics

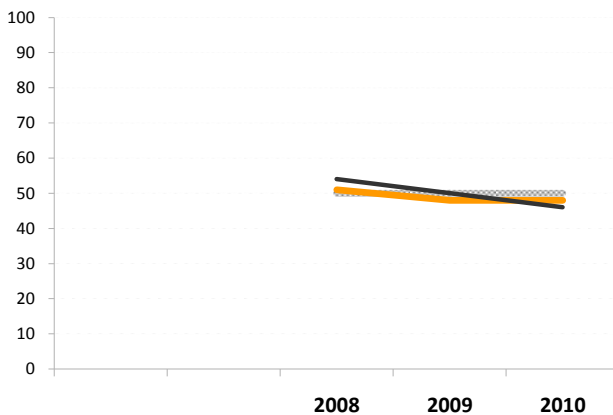


		2006	2007	2008	2009	2010
Dennis-Yarmouth	N	2,175	2,064	1,951	1,864	1,822
	#	1,374	1,331	1,219	1,202	1,152
	%	63%	64%	62%	64%	63%
Barnstable	N	2,191	1,998	2,079	1,884	1,991
	#	1,548	1,469	1,535	1,392	1,561
	%	71%	74%	74%	74%	78%
State	N	512,227	506,516	501,242	499,025	498,668
	#	322,518	333,093	324,036	335,085	339,985
	%	63%	66%	65%	67%	68%

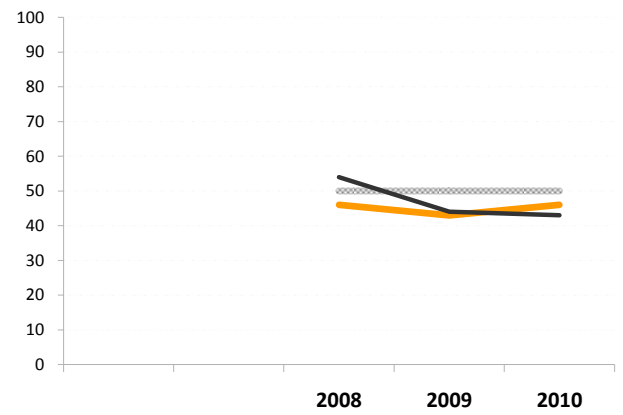
		2006	2007	2008	2009	2010
Dennis-Yarmouth	N	2,168	2,048	1,947	1,868	1,823
	#	973	998	957	919	882
	%	45%	49%	49%	49%	48%
Barnstable	N	2,195	2,001	2,084	1,892	1,986
	#	1,104	1,236	1,326	1,152	1,288
	%	50%	62%	64%	61%	65%
State	N	512,087	505,812	501,970	499,717	498,632
	#	238,579	268,022	276,953	278,481	289,591
	%	47%	53%	55%	56%	58%

Median Student Growth Percentiles (SGP)

English Language Arts



Mathematics



		2008	2009	2010
Dennis-Yarmouth	N	1,329	1,446	1,399
	SGP	51.0	48.0	48.0
Barnstable	N	1,194	1,380	1,462
	SGP	54.0	50.0	46.0
State	N	329,788	396,371	396,078
	SGP	50.0	50.0	50.0

		2008	2009	2010
Dennis-Yarmouth	N	1,332	1,456	1,402
	SGP	46.0	43.0	46.0
Barnstable	N	1,195	1,385	1,469
	SGP	54.0	44.0	43.0
State	N	330,279	397,572	396,662
	SGP	50.0	50.0	50.0

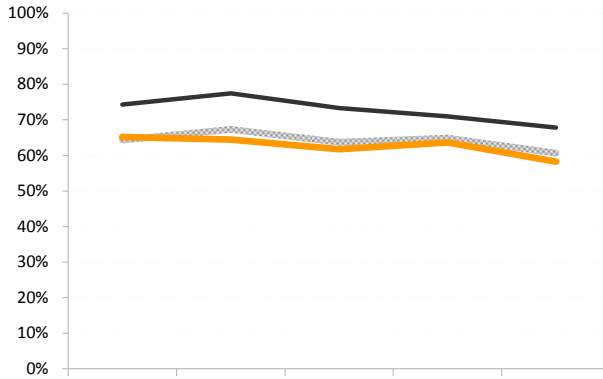
Your District: Dennis-Yarmouth
Comparable District: Barnstable

Select Grade: All Grades

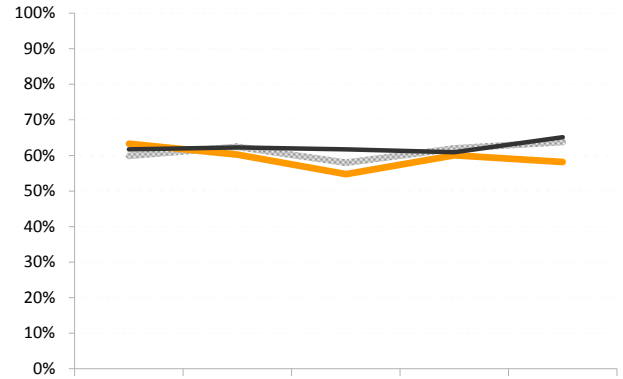
Select Subgroup: All Students

Percent of Students Averaging 2 or Above on Open Response Items

English Language Arts



Mathematics



		2006	2007	2008	2009	2010
■ Dennis-Yarmouth	N	2,175	2,064	1,951	1,864	1,822
	#	1,417	1,330	1,205	1,186	1,062
	%	65%	64%	62%	64%	58%
■ Barnstable	N	2,191	1,998	2,079	1,884	1,991
	#	1,628	1,547	1,524	1,337	1,350
	%	74%	77%	73%	71%	68%
▨ State	N	512,227	506,516	501,242	499,025	498,668
	#	329,642	341,033	319,387	323,748	302,459
	%	64%	67%	64%	65%	61%

		2006	2007	2008	2009	2010
■ Dennis-Yarmouth	N	2,168	2,048	1,947	1,868	1,823
	#	1,372	1,234	1,066	1,122	1,061
	%	63%	60%	55%	60%	58%
■ Barnstable	N	2,195	2,001	2,084	1,892	1,986
	#	1,355	1,246	1,286	1,152	1,294
	%	62%	62%	62%	61%	65%
▨ State	N	512,087	505,812	501,970	499,717	498,632
	#	306,677	315,947	290,931	309,559	318,104
	%	60%	62%	58%	62%	64%

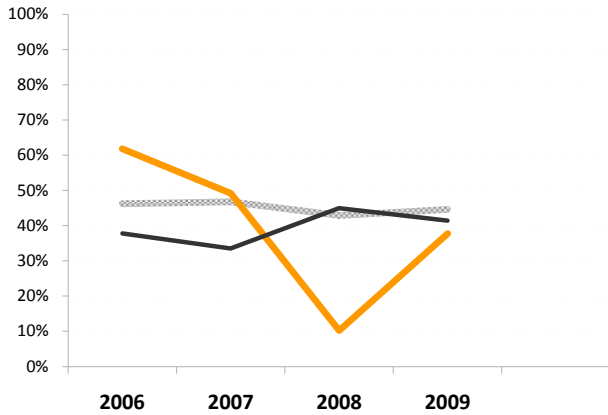
Your District: Dennis-Yarmouth
Comparable District: Barnstable

Select Grade: All Grades

Select Subgroup: All Students

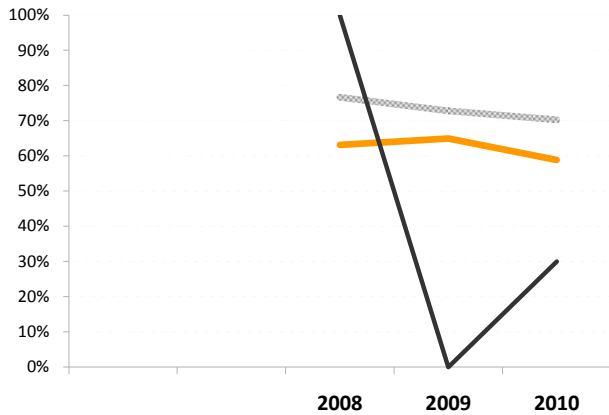
Grade-specific Indicators

Grade 8 Enrollment in Algebra



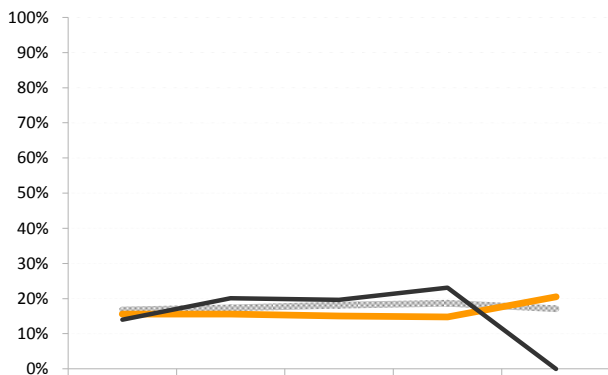
		2006	2007	2008	2009
Dennis-Yarmouth	N	270	293	265	286
	#	167	144	27	108
	%	62%	49%	10%	38%
Barnstable	N	498	301	438	432
	#	188	101	197	179
	%	38%	34%	45%	41%
State	N	69,774	66,633	65,311	65,727
	#	32,268	31,133	28,012	29,322
	%	46%	47%	43%	45%

Percentage of High School Graduates Completed MASSCore



		2008	2009	2010
Dennis-Yarmouth	N	217	217	204
	#	137	141	120
	%	63%	65%	59%
Barnstable	N	414	379	374
	#	414	0	112
	%	100%	0%	30%
State	N	42,042	63,700	63,072
	#	32,218	46,374	44,311
	%	77%	73%	70%

Percentage of Juniors/Seniors Enrolled in at least one Advanced Placement Course (All Students Only)



		2006	2007	2008	2009	2010
Dennis-Yarmouth	N	576	540	538	527	473
	#	90	84	81	78	97
	%	16%	16%	15%	15%	21%
Barnstable	N	916	886	884	865	807
	#	128	178	174	200	0
	%	14%	20%	20%	23%	0%
State	N	141,619	143,249	145,093	143,743	142,235
	#	23,728	24,869	26,355	26,835	24,325
	%	17%	17%	18%	19%	17%



**Curriculum and Instruction
Assessment
Achievement Gap**

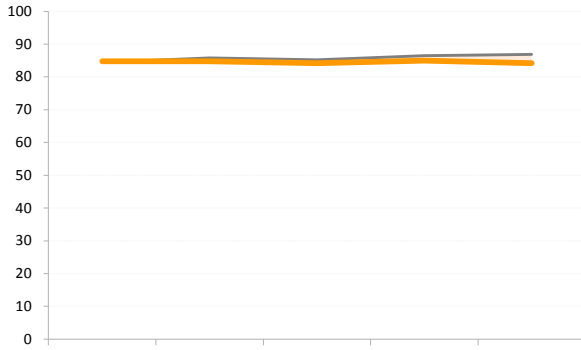
Your District: **Dennis-Yarmouth**
 Comparable District: **Barnstable**

Select Grade: **All Grades**

Select Subgroup: **All Students**

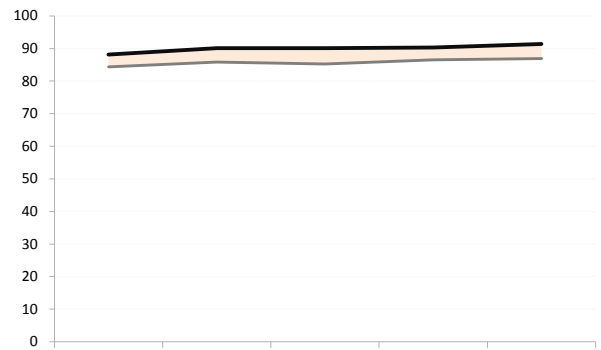
CPI Achievement Gap - English Language Arts

Dennis-Yarmouth



		2006	2007	2008	2009	2010
State	N	512,227	506,516	501,242	499,025	498,668
	CPI	84.4	85.8	85.2	86.5	86.9
Dennis-Yarmouth	N	2,175	2,064	1,951	1,864	1,822
	CPI	84.8	84.8	84.2	85.0	84.2
CPI Gap		0.4	-1.0	-1.0	-1.5	-2.7

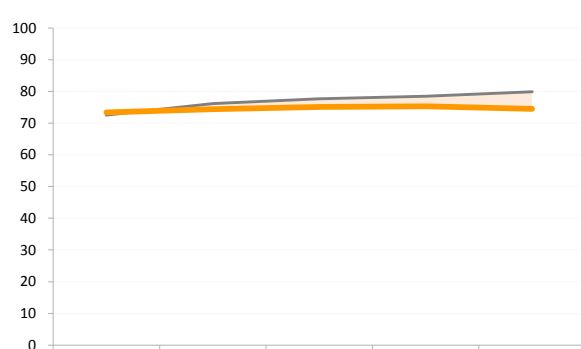
Barnstable



		2006	2007	2008	2009	2010
State	N	512,227	506,516	501,242	499,025	498,668
	CPI	84.4	85.8	85.2	86.5	86.9
Barnstable	N	2,191	1,998	2,079	1,884	1,991
	CPI	88.2	90.1	90.1	90.3	91.4
CPI Gap		3.8	4.3	4.9	3.8	4.5

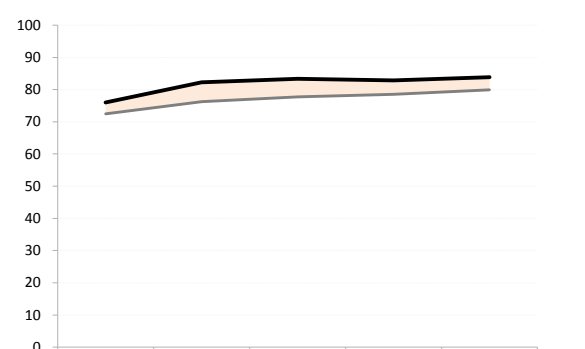
CPI Achievement Gap - Mathematics

Dennis-Yarmouth



		2006	2007	2008	2009	2010
State	N	512,087	505,812	501,970	499,717	498,632
	CPI	72.5	76.2	77.7	78.5	79.9
Dennis-Yarmouth	N	2,168	2,048	1,947	1,868	1,823
	CPI	73.3	74.4	75.1	75.3	74.5
CPI Gap		0.8	-1.8	-2.6	-3.2	-5.4

Barnstable



		2006	2007	2008	2009	2010
State	N	512,087	505,812	501,970	499,717	498,632
	CPI	72.5	76.2	77.7	78.5	79.9
Barnstable	N	2,195	2,001	2,084	1,892	1,986
	CPI	76.0	82.3	83.3	82.9	83.8
CPI Gap		3.4	6.1	5.6	4.4	3.9

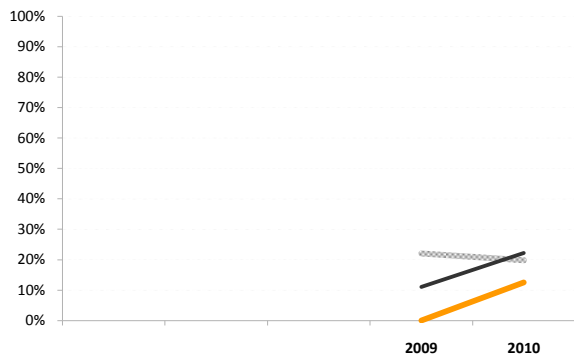
Your District: Dennis-Yarmouth

Comparable District: Barnstable

District Superintendent Turnover Rate

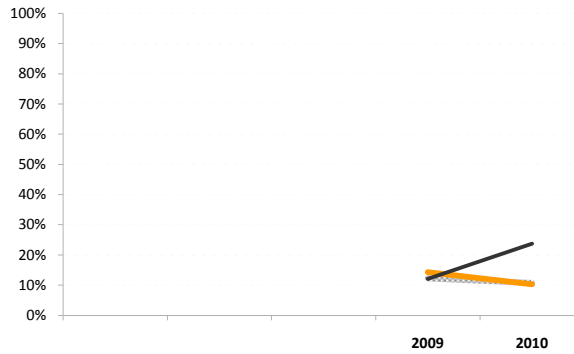
		2009	2010
Dennis-Yarmouth	Superintendent	1	1
	Turnover #	0	0
	Turnover Rate	0%	0%
Barnstable	Superintendent	1	1
	Turnover #	0	0
	Turnover Rate	0%	0%
State	Superintendent	390	384
	Turnover #	77	86
	Turnover Rate	20%	22%

School Principal Turnover Rate



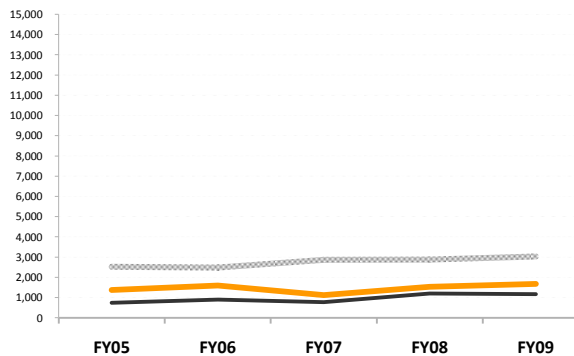
		2009	2010
Dennis-Yarmouth	Principals	8	8
	Turnover #	0	1
	Turnover Rate	0%	13%
Barnstable	Principals	9	9
	Turnover #	1	2
	Turnover Rate	11%	22%
State	Principals	1,526	1,548
	Turnover #	336	307
	Turnover Rate	22%	20%

Teacher Turnover Rate



		2009	2010
Dennis-Yarmouth	Teachers	308	291
	Turnover #	44	30
	Turnover Rate	14%	10%
Barnstable	Teachers	372	350
	Turnover #	45	83
	Turnover Rate	12%	24%
State	Teachers	64,026	65,020
	Turnover #	8,933	7,820
	Turnover Rate	12%	11%

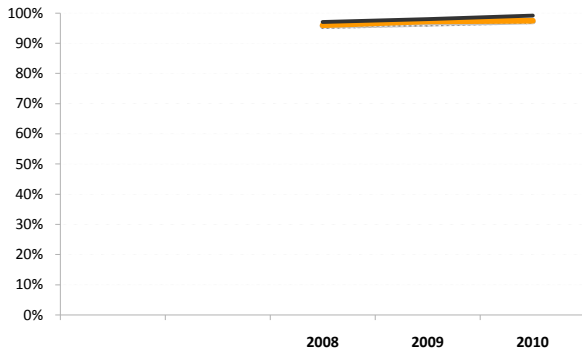
Professional Development Spending Per Teacher (FTE)



		FY05	FY06	FY07	FY08	FY09
Dennis-Yarmouth	Teachers (FTE)	348.8	323.7	309.2	300.1	285.5
	PD Expenditure	\$480K	\$514K	\$347K	\$458K	\$478K
	Per Teacher	\$1,375	\$1,588	\$1,122	\$1,525	\$1,673
Barnstable	Teachers (FTE)	381.3	380.5	367.9	351.8	334.1
	PD Expenditure	\$284K	\$340K	\$286K	\$422K	\$388K
	Per Teacher	\$744	\$894	\$778	\$1,201	\$1,162
State	Teachers (FTE)	73,394.3	73,593.1	73,176.0	70,716.6	70,395.9
	PD Expenditure	\$184.7M	\$182.6M	\$209.3M	\$203.7M	\$213.5M
	Per Teacher	\$2,516	\$2,482	\$2,860	\$2,881	\$3,033

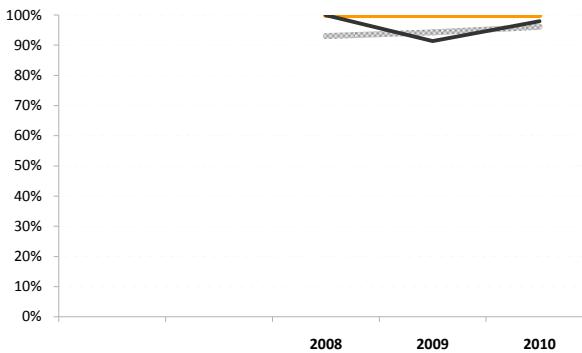
Your District: Dennis-Yarmouth
Comparable District: Barnstable

% of Core Academic Classes Taught by Highly Qualified Teachers



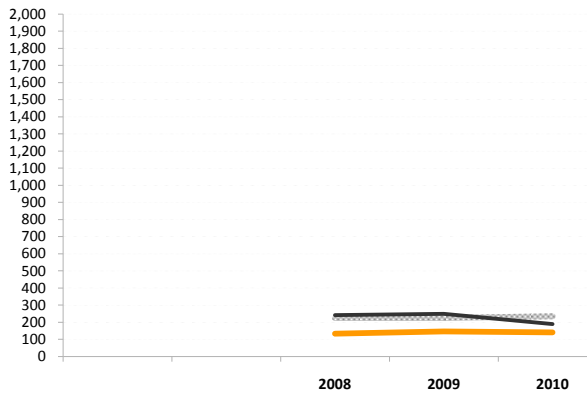
	2008	2009	2010	
Dennis-Yarmouth	Core Academic Classes	1,360	1,117	1,081
	Highly Qualified Teachers	96%	97%	98%
Barnstable	Core Academic Classes	1,277	1,341	1,245
	Highly Qualified Teachers	97%	98%	99%
State	Core Academic Classes	275,949	279,742	280,489
	Highly Qualified Teachers	96%	97%	97%

% of Grade 7 or 8 Math Classes Taught by Highly Qualified Math Teachers



	2008	2009	2010	
Dennis-Yarmouth	Math Classes (Grade 7/8)	38	35	33
	Highly Qualified Teachers	100%	100%	100%
Barnstable	Math Classes (Grade 7/8)	46	74	46
	Highly Qualified Teachers	100%	91%	98%
State	Math Classes (Grade 7/8)	7,563	8,372	8,797
	Highly Qualified Teachers	93%	94%	96%

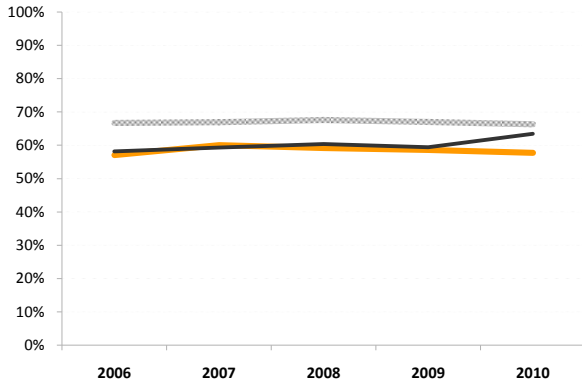
Student-to-Arts-Teacher ratio (K-8 art, music, dance, drama)



	2008	2009	2010	
Dennis-Yarmouth	K-8 Enrollment	2,514	2,428	2,382
	K-8 Arts Teachers (FTE)	18.8	16.6	16.9
	Students per Teacher	133.9	146.7	140.9
Barnstable	K-8 Enrollment	2,580	2,533	2,471
	K-8 Arts Teachers (FTE)	10.7	10.2	13.0
	Students per Teacher	242.0	249.1	190.1
State	K-8 Enrollment	640,391	639,019	637,858
	K-8 Arts Teachers (FTE)	2,839.4	2,828.7	2,717.0
	Students per Teacher	225.5	225.9	234.8

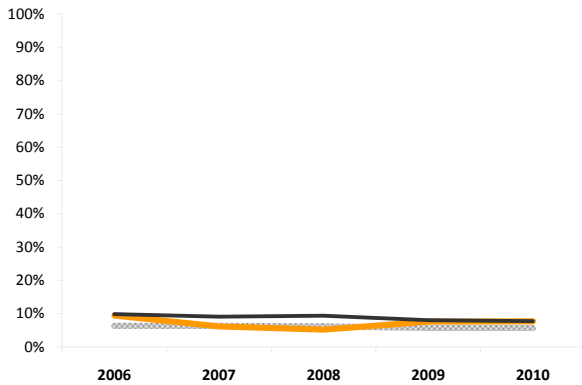
Your District: Dennis-Yarmouth
Comparable District: Barnstable

Student Attendance (% of students absent fewer than 10 days each year)



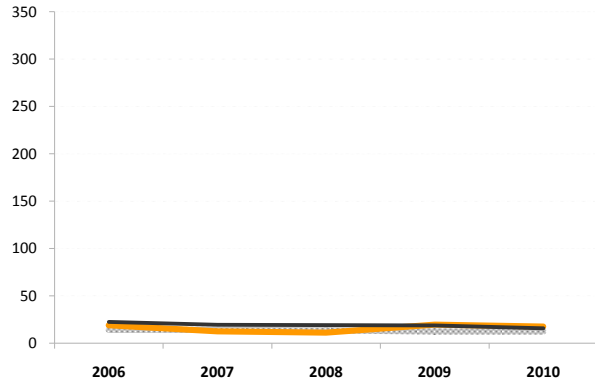
	2006	2007	2008	2009	2010	
Dennis-Yarmouth	Students Incl.	4,197	4,000	3,798	3,672	3,525
	# Absent <10	2,395	2,401	2,248	2,152	2,036
	% Absent <10	57%	60%	59%	59%	58%
Barnstable	Students Incl.	4,996	4,785	4,725	4,614	4,527
	# Absent <10	2,904	2,840	2,852	2,743	2,871
	% Absent <10	58%	59%	60%	59%	63%
State	Students Incl.	1,019,881	1,012,942	1,005,353	999,363	997,187
	# Absent <10	680,194	677,889	679,294	669,480	661,347
	% Absent <10	67%	67%	68%	67%	66%

Percentage of Students Suspended Out-of-School At Least Once



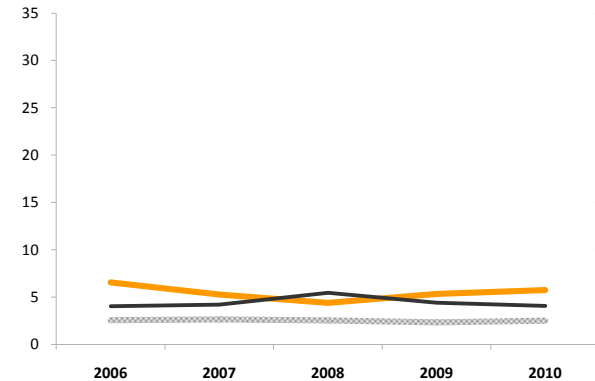
	2006	2007	2008	2009	2010	
Dennis-Yarmouth	Students Incl.	3,956	3,803	3,586	3,461	3,349
	# Suspended	373	235	185	261	256
	% Suspended	9%	6%	5%	8%	8%
Barnstable	Students Incl.	4,728	4,543	4,457	4,354	4,293
	# Suspended	466	411	416	351	332
	% Suspended	10%	9%	9%	8%	8%
State	Students Incl.	972,374	968,661	963,128	961,272	957,064
	# Suspended	61,074	60,983	59,195	54,642	55,058
	% Suspended	6%	6%	6%	6%	6%

Number of Incidents Resulting in Out-of-School Suspensions



	2006	2007	2008	2009	2010	
Dennis-Yarmouth	Students Incl.	3,956	3,803	3,586	3,461	3,349
	# of Incidents	759	481	400	677	590
	Per 100 Students	19.2	12.6	11.2	19.6	17.6
Barnstable	Students Incl.	4,728	4,543	4,457	4,354	4,293
	# of Incidents	1,065	883	849	821	687
	Per 100 Students	22.5	19.4	19.0	18.9	16.0
State	Students Incl.	972,374	968,661	963,128	961,272	957,064
	# of Incidents	138,864	137,987	132,666	119,938	121,215
	Per 100 Students	14.3	14.2	13.8	12.5	12.7

Number of Criminal, Drug- or Tobacco-Related, and Violent Incidents Resulting in Out-of-School Suspensions

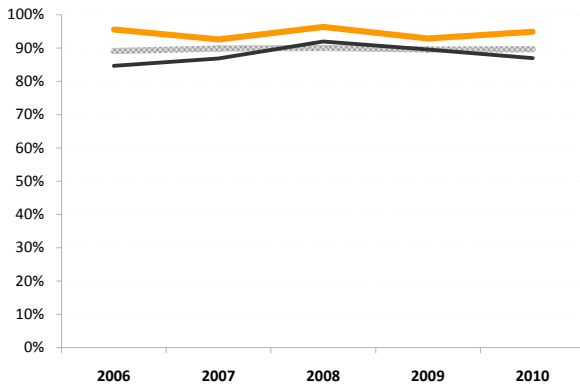


	2006	2007	2008	2009	2010	
Dennis-Yarmouth	Students Incl.	3,956	3,803	3,586	3,461	3,349
	# of Incidents	259	200	157	184	192
	Per 100 Students	6.5	5.3	4.4	5.3	5.7
Barnstable	Students Incl.	4,728	4,543	4,457	4,354	4,293
	# of Incidents	191	191	243	192	174
	Per 100 Students	4.0	4.2	5.5	4.4	4.1
State	Students Incl.	972,374	968,661	963,128	961,272	957,064
	# of Incidents	24,733	25,408	24,437	22,328	24,053
	Per 100 Students	2.5	2.6	2.5	2.3	2.5

Your District: Dennis-Yarmouth

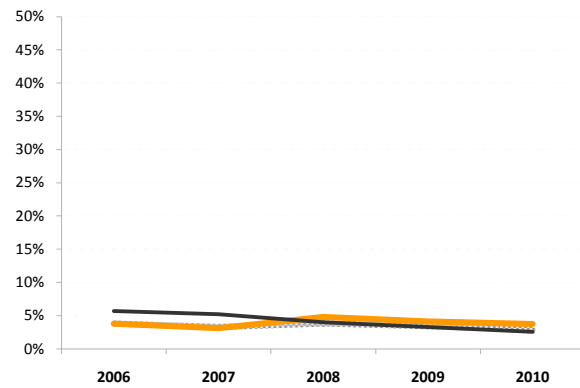
Comparable District: Barnstable

9th to 10th Grade Promotion Rate (First-time 9th graders only)



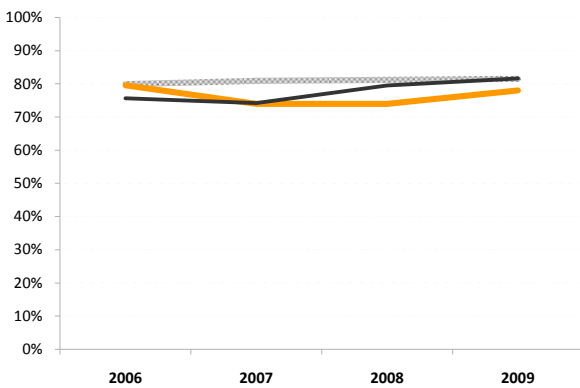
	2006	2007	2008	2009	2010
Dennis-Yarmouth					
Students Incl.	269	268	219	225	216
# Promoted	257	248	211	209	205
% Promoted	96%	93%	96%	93%	95%
Barnstable					
Students Incl.	443	487	373	439	423
# Promoted	375	423	343	393	368
% Promoted	85%	87%	92%	90%	87%
State					
Students Incl.	76,345	75,668	73,333	73,109	73,182
# Promoted	68,030	67,972	66,025	65,461	65,580
% Promoted	89%	90%	90%	90%	90%

Annual Dropout Rate



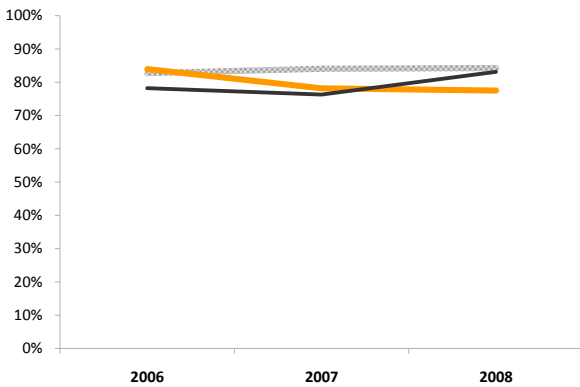
	2005	2006	2007	2008	2009
Dennis-Yarmouth					
# Dropouts	43	34	52	41	36
% Dropouts	3.8%	3.1%	4.8%	4.1%	3.7%
Barnstable					
# Dropouts	112	97	73	58	43
% Dropouts	5.7%	5.2%	4.0%	3.3%	2.5%
State					
# Dropouts	11,145	9,910	11,436	9,959	8,585
% Dropouts	3.8%	3.3%	3.8%	3.4%	2.9%

4-year Cohort Graduation Rate



	2006	2007	2008	2009
Dennis-Yarmouth				
Students Incl.	292	269	285	273
% Graduated (4 Yrs)	79.5%	74.0%	74.0%	78.0%
Barnstable				
Students Incl.	532	519	526	456
% Graduated (4 Yrs)	75.6%	74.2%	79.5%	81.6%
State				
Students Incl.	74,380	75,912	77,383	77,038
% Graduated (4 Yrs)	79.9%	80.9%	81.2%	81.5%

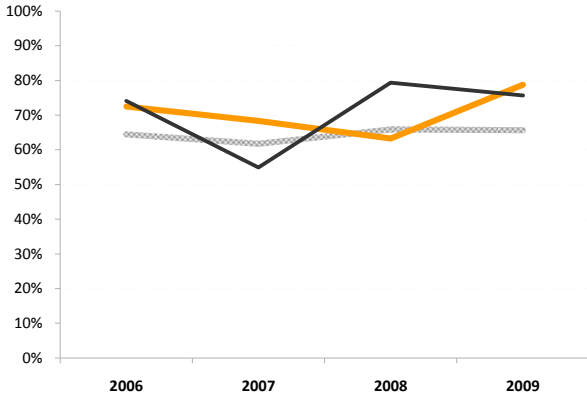
5-year Cohort Graduation Rate



	2006	2007	2008
Dennis-Yarmouth			
Students Incl.	292	269	285
% Graduated (5 Yrs)	83.9%	78.1%	77.5%
Barnstable			
Students Incl.	532	519	526
% Graduated (5 Yrs)	78.2%	76.3%	83.1%
State			
Students Incl.	74,380	75,912	77,383
% Graduated (5 Yrs)	82.7%	84.0%	84.2%

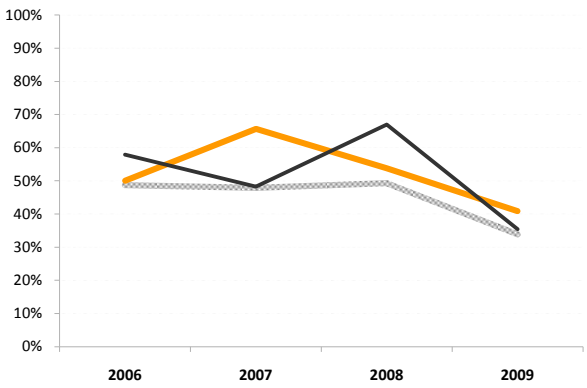
Your District: Dennis-Yarmouth
Comparable District: Barnstable

English language learners making progress on the Massachusetts English Proficiency Assessment (MEPA)



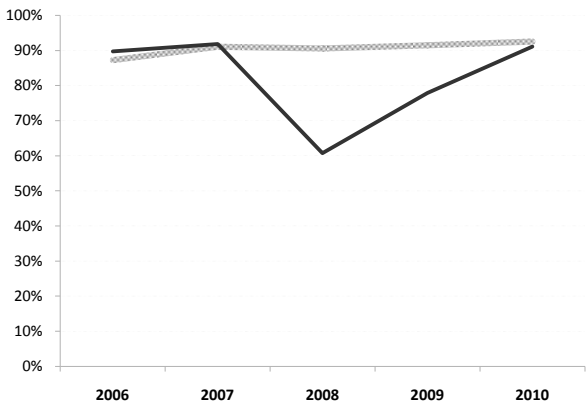
	2006	2007	2008	2009
Dennis-Yarmouth				
Students Incl.	80	82	87	66
# Making Progress	58	56	55	52
% Making Progress	73%	68%	63%	79%
Barnstable				
Students Incl.	85	82	126	74
# Making Progress	63	45	100	56
% Making Progress	74%	55%	79%	76%
State				
Students Incl.	27,719	28,571	40,852	30,420
# Making Progress	17,858	17,639	26,910	19,982
% Making Progress	64%	62%	66%	66%

ELL students who attained English Language Proficiency



	2006	2007	2008	2009
Dennis-Yarmouth				
Students Incl.	68	67	78	120
# Attained	34	44	42	49
% Attained	50%	66%	54%	41%
Barnstable				
Students Incl.	57	58	109	189
# Attained	33	28	73	67
% Attained	58%	48%	67%	35%
State				
Students Incl.	23,569	24,390	37,178	52,472
# Attained	11,480	11,673	18,340	17,775
% Attained	49%	48%	49%	34%

Return to Classroom Rate from School Nurse



	2006	2007	2008	2009	2010
Dennis-Yarmouth					
Students Incl.	--	--	--	--	--
# Returned	--	--	--	--	--
%					
Barnstable					
Students Incl.	57,542	68,143	75,992	69,181	35,217
# Returned	51,613	62,551	46,153	53,865	32,067
%	90%	92%	61%	78%	91%
State					
Students Incl.	3,532,216	4,720,997	4,414,450	3,969,277	4,131,112
# Returned	3,081,557	4,299,019	3,999,297	3,630,980	3,823,451
%	87%	91%	91%	91%	93%

Determination of need for special education technical assistance or intervention

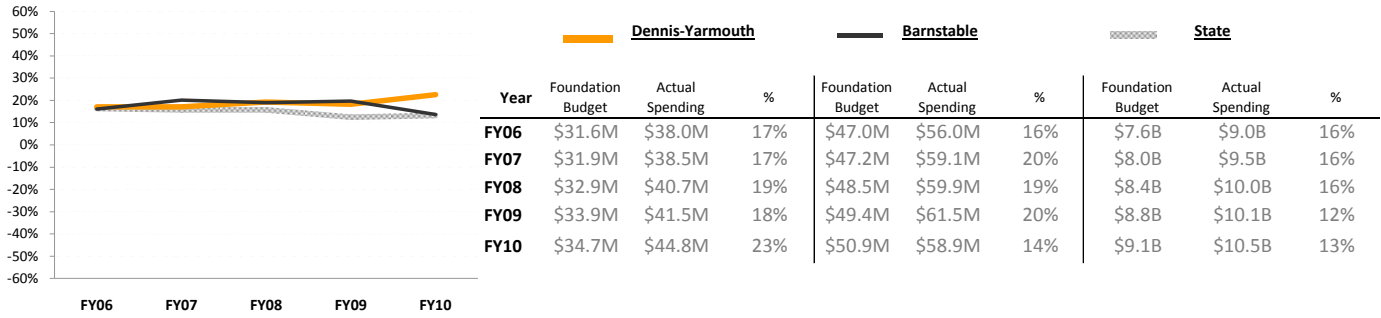
District	2008-09
Dennis-Yarmouth	Needs Intervention
Barnstable	Meets Requirements

Level 1	Meets Requirements
Level 2	At Risk
Level 3	Needs Technical Assistance
Level 4	Needs Intervention
Level 5	Needs Substantial Intervention

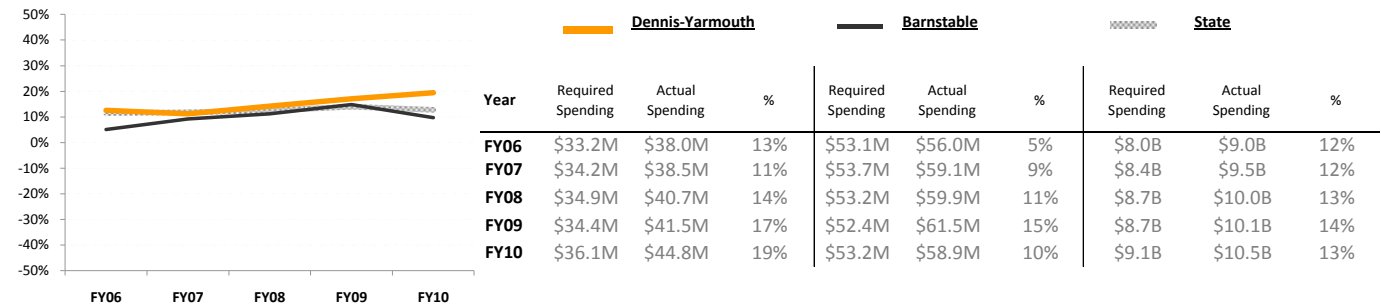
Your District: Dennis-Yarmouth

Comparable District: Barnstable

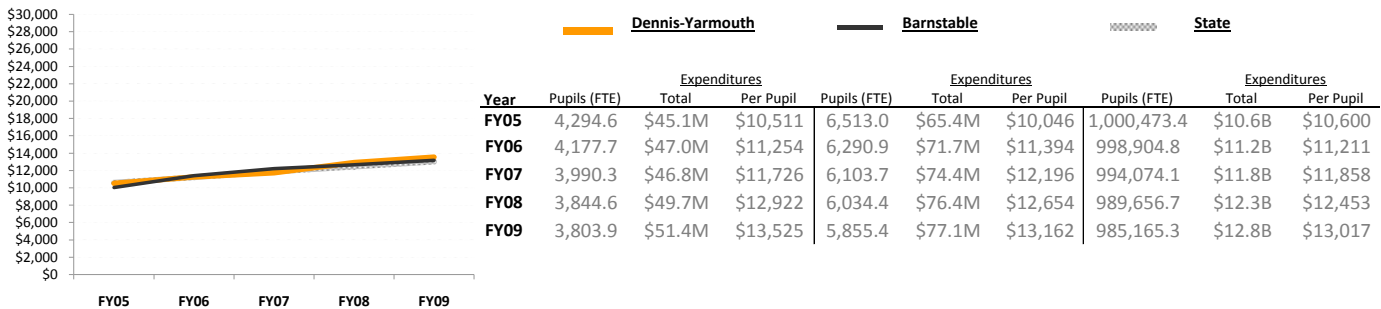
Percent Net School Spending above Foundation Budget



Percent Actual Net School Spending above Required Net School Spending



Total Per Pupil Expenditures



In-district Transportation Cost Per Pupil

